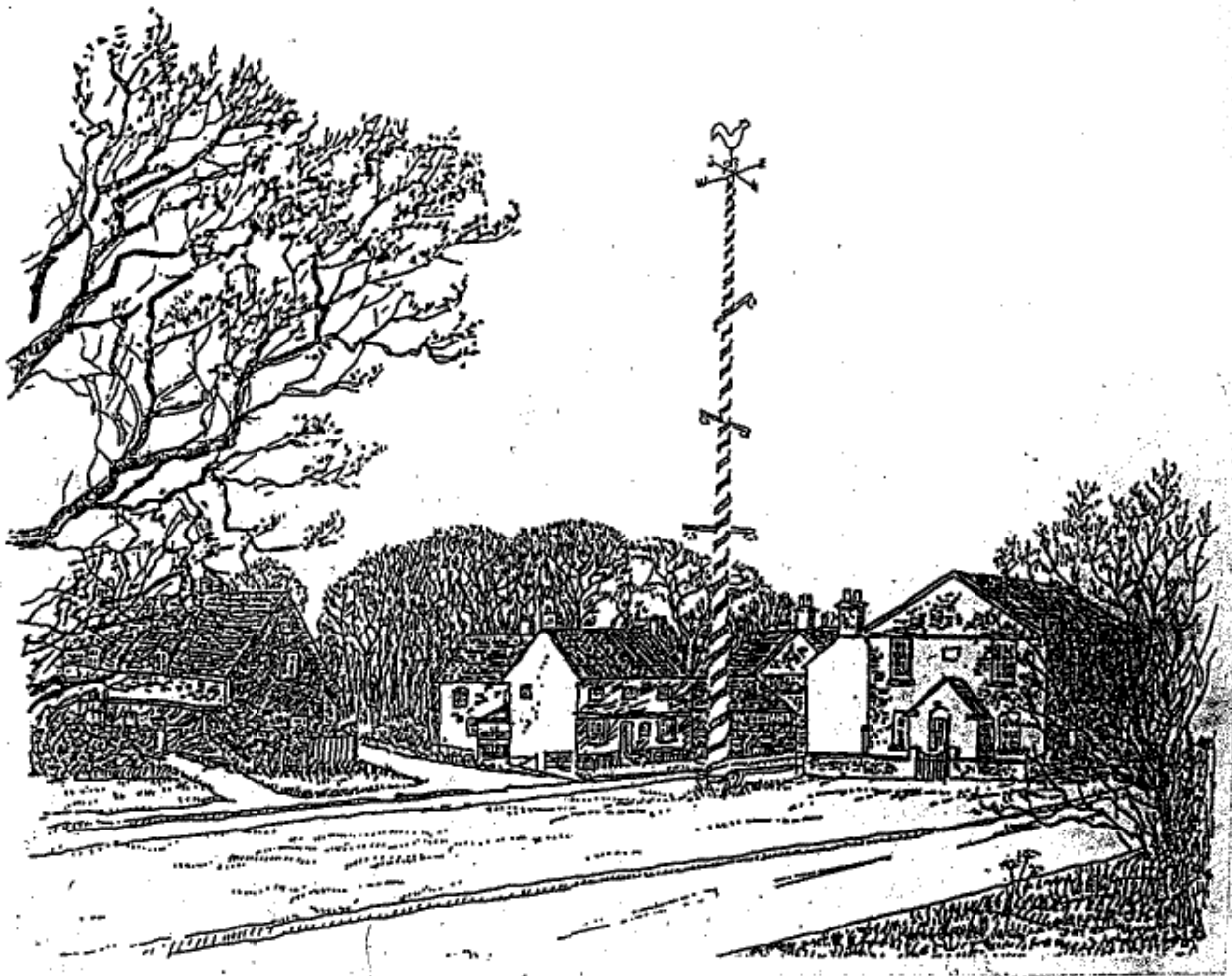


# WELLOW

the Maypole Village



**The Olde Red Lion - Eakring Road**  
**(NOT TO BE REMOVED)**

[www.wellow.me/](http://www.wellow.me/)



## WELLOW

### Introduction

Wellow is probably best known for its maypole. Every year, local people and visitors gather on and around the green to celebrate the arrival of spring with music and dancing. Exactly when Wellow's maypole dancing began is not known but the village itself has a long and interesting history that can be traced back through the centuries using a variety of historical source material. This pack attempts to provide an illustrative range of archival and printed material that while certainly not comprehensive may provide the basis for a fuller explanation of documentary evidence.

Wellow is a small village of about 500 inhabitants. It lies about a mile east of Ollerton and eleven miles west of Newark. Running through the north of the village is the A616, a busy road that passes between Newark and Ollerton. From the south Wellow can be approached from Eakring, along a pleasant, meandering road that leads the visitor into the heart of the village, where pretty cottages cluster around the triangular shaped green.

For most of its history Wellow earned its living from agriculture, and the fortunes of the village and its people have been closely tied to the land. As the parish sits largely on keuper marl, which produces heavy clay soil, farmers and labourers must have had hard working lives. In a few places the predominance of lighter soils usually reflects the presence of bunter sandstone, and this rock can be seen in the village itself, providing a foundation for several cottages. By the nineteenth century the range of local occupations was still predominantly rural, but it had widened out to include some professional occupations and for a time chairmaking became an important local industry.

One of the most interesting aspects of Wellow's history is its long association with Rufford Abbey. In fact from 1146, when Gilbert de Gant founded Rufford, the development of the two places has been closely associated. Indeed Wellow is thought to have been created by villages displaced from existing settlements (Cratley, Grimston, Wirchenfield and Rufford villages) as the Abbey sought to extend its land for sheep farming and to achieve the Cisterian ideal of spiritual seclusion.

In medieval times the inhabitants of Wellow had an uneasy relationship with the abbot and monks of nearby Rufford Abbey, with sometimes vigorous disputes arising over the building of houses and the ownership of woodland. Then, after dissolution the village had close, though happier links, with the Savile family, who occupied Rufford until its sale in 1938. The Dukes of Newcastle, who lived at Clumber, were also influential in Wellow's history, and among the families of local importance were the Molyneux, the Hastings and Foliots.

## THE ANCIENT ORIGINS OF WELLOW

Wellow was not listed in the Domesday Book. Infact, it is thought that Wellow came into existence as a result of the founding of a Cistercian Abbey at Rufford in the twelfth century.

At the time of the Domesday survey this region contained three settlements: Grimston, Cratley and Rufford itself. Grimston lay on the present day Ollerton Newark road, one mile east of Wellow, near the crest of what is known as Grimston Hill. (North of this site is the earthwork known as Jordan Castle, which is the site of the fortified manor house of Grimston). Rufford settlement is thought to have been in the area of the Old Kennels, but had disappeared by 1218. The third was Cratley, which was a large village at Domesday, with twenty two villeins and two bordars having nine ploughs, as well as two ploughs in desmesne. The site of Cratley is thought to approximate with what is now North Laithes Farm.

The foundation of Rufford Abbey by Gilbert de Gant in 1146 heralded the destruction of existing villages-a usual Cistercian practice. A charter exists, witnessed by two archdeacons within the first decade of Rufford's founding, which details an agreement dispossessing the peasants of Rufford and compensating them for their loss. As for Cratley, the Cistercian grange here (which was first mentioned in 1160) was established in the centre of the village, with the result that the village gradually diminished, and had finally disappeared by 1329, as the grange became established.

It is possible that there is a link between the disappearance of Rufford and Cratley and the emergence of Wellow. The village of Grimston was not immediately affected by these changes but ultimately declined owing probably to the more attractive siting of Wellow. Historians believe that Wellow may stand on the sokeland of the manor of Grimston, which was assessed at Domesday at 4 bovates, part of the manor of Mansfield, and another 1½ bovates of sokeland of the same manor. It is thought that some of the displaced peasants, made free by the abbot of Rufford, were allowed to join a small settlement of sokemen, and the fact that parts of the parish church of St. Swithin date back to the twelfth century help to confirm the emergence of the village of Wellow at that time.

In one of the earliest references to the 'new' village of Wellow, a dispute between the villagers and Rufford Abbey early in the thirteenth century provides proof that the Wellow men were free, and suggest strongly that they had connections with Rufford land which they were reluctant to give up. In the Pipe Roll of 1207 the abbot of Rufford accounts for ten marks for 'license to build houses and place men on his land next to the great way to defend his wood in which men of Wellow were accustomed to hunt provided that he does not obstruct the Kings highway.' The villagers did not accept this quietly, for two years later they were fined the large sum of 20 marks for knocking the abbot's houses down. More legal methods were attempted the following year when



three individuals tried, and failed, to persuade the King's court that the abbot has disseised them of common pasture in Grimston and Wellow.

The inhabitants of Wellow obviously displayed a very independent nature, and it may well be this which led to the earthworks surrounding the village, today known as the Gorge Dyke. One theory suggests that the earthwork is a 'hay' of the Dark Ages which was occupied by the two sokeman referred to at the time of Domesday, and another that the 'hay' was a division denoting the boundary of the Royal forest. The place name of Wellow actually means 'an enclosure near a spring', which presumably refers to the earthworks encircling the village; the spring emerges north west of the village and feeds Wellow Dam. As the enclosure in question is not big enough to constitute a deer park or similar, it is more likely that it was for communal defence.

Much of the character of the earthwork is still evident today. On the south west side of the village the ditch takes advantage of the course of a small stream which has cut through the marl to the sandstone below. On the north side the ditch has been filled in, but its line is traceable by property boundaries. On the north east side it is about 8 feet deep and the inner bank is very pronounced. South of the road going towards Grimston, the bank is dispersed to form an inner platform, and the ditch is wide and shallow. It has again been filled in at the south east corner. Although it is known as Gorge Dyke, there is no record of this name before the 19th century. It is now scheduled as an Ancient Monument by the Department of the Environment.

Another unusual feature of Wellow is its village green, one of only two large greens in Nottinghamshire (the other is at Car Colston). Its triangular shape is also extremely rare. The origins of the green may lie in the need of the original dwellers to have an open area in the centre of the moated settlement to impound their stock to prevent plundering by attackers. However, it is known that Richard Foliot, whose son gives his name to Jordan Castle, obtained permission for a market at Wellow in 1268. This would suggest that the green was a medieval market place. However its unusual shape and siting, the existence of other defensive sites in the area, and the anarchy during King Stephen's reign, tend to suggest that the green did indeed serve as a compound into which cattle could be driven.

More information about the above can be found in The Rufford Charters (Thoroton Society Records) and an article 'Cistercian Land Clearances in Nottinghamshire: Three Deserted Villages and their Moated Successor' written by Professor M.W. Barley, which appeared in Nottingham Medieval Studies Vol. I (1957).

### THE RELIGIOUS BUILDINGS OF WELLOW

A church has stood on the present site in Wellow for eight hundred years. Indeed part of the church, the small window in the north wall, dates from the year 1190. Since that time many additions and alterations have been carried out, with the tower dating mainly from the fourteenth century. There are three bells in the tower, each with its own inscription. These read:-

Gloria in Excelsis Deo 1560

God save the Church 1635

Jesus be our Guide 1660

At one time the pancake bell used to be rung in Wellow church at 11.a.m. on Shrove Tuesday, but this custom has been discontinued for some time. (See caption No.13 for bellringing custom in connection with Lady Waldane).

The east window of the chancel is in memory of William S. Ward surgeon, who lived at Wellow Hall during the time it was a hospital and dispensary for the poor ( see the historical background to the extract from White's Directory, No.15). At the turn of the century, the Hall was occupied by the vicar, before he moved to the present vicarage on Potter Lane, which is a converted farmhouse.

Probably the most famous incumbent of Wellow was William Mompesson, who came to the village in 1663. After two years he then went to Eyam in Derbyshire, and ministered there whilst plague decimated the village's population. Three years after the plague had passed, Mompesson went to Eakring, but superstition was strong and the inhabitants would not have him in the village. For a time he was forced to live in a hut in Rufford Park.

Nonconformity is strong in this part of Nottinghamshire, and at one time Wellow was able to boast two Methodist chapels. The Primitive Methodist Chapel was built in 1847, and stands on the green near the maypole. The Wesleyans had their chapel in Billet Lane, but it was vacated when they and the Primitive Methodists united. It is now used as a workshop, and the chapel on the green was converted into a private dwelling in 1987.

## THE MAYPOLE

May Day celebrations are one of many rural traditions where origins are lost in the past, but which for centuries added unfounded entertainment to the agricultural year. In a similar tradition, there were performances of Plough Monday plays and entertainment was also provided by Mummers and Morris Dancers.

Maypoles have certainly existed since medieval times, providing a focal point for May Day dancing, music and revelry. However, the Puritans were suspicious of their possible origin in early pagan rites and felt they represented a challenge to the Established Church, and many poles were uprooted in the 1640's. This superstition came to an end with the restoration of Charles II, when May Day celebrations were revived. During this century the influence of modern forms of entertainment and changing community values led to a decline in May Day festivities, though in recent years there has been a great revival of interest in maypole dancing and other rustic festivities, only four permanent maypoles remain in the whole of England.

The existence of a Wellow maypole can be traced as far back as 1856 (see the Guardian Journal 2nd May, 1972) and on the 9th May, 1860 a new pole had to be erected, as the old one had been sawn down during a drinking spree a few weeks earlier. To commemorate Queen Victoria's jubilee in 1887, a new pole was given by Sir John Savile, which had three cross-pieces near its summit, painted spiral decoration and a seat around the base. In 1923 the jubilee maypole was replaced by Lord Savile, and this pole lasted until 1937, when it was found to be unsafe and cut down from 60 feet to 20 feet. In 1949, this pole was finally chopped down for safety reasons, and in 1950 a new pole was bought from the Rufford Estate; at this time a maypole committee was formed to carry on the tradition and organise the event. The 1950 pole lasted until 1966 when it was damaged by storm, and was taken down and sold for firewood. Another pole of larch was obtained from Thoresby Estate, but on finding it had not been properly seasoned, it was declared unsafe by Nottinghamshire County Council and, in 1976 it was chopped down to half size. That year the dancing took place round the reduced pole. Later in 1976 the remainder of the pole was taken down, and in 1977, with the help of a heritage year grant, a three section 60 foot tubular steel pole was purchased from Abacus Engineering of Sutton in Ashfield. This present pole is decorated with three cross pieces with metal crown shapes at each end, and surmounting the pole is a weathervane made by a local engineer.

The actual dancing celebrations at Wellow have not been continuous during this century. Festivities stopped during World War 1, and again during the Second World War.

Originally celebrations took place on May Day itself, but in recent years they have been held on Spring Bank Holiday Monday. A principal part of the proceedings is the crowning of the May Queen, who is chosen by a secret ballot of villages held earlier in the year, the girls have to be between 12 and 17 years of age. During the festivities the new Queen is crowned by the retiring Queen, and then takes her place on the May throne to watch the maypole dancing. She is accompanied by four maids of honour who are selected according to the results of the poll, and a retinue that includes the herald, bugle blower, posy bearers, train bearers and a crown bearer. There seems to be no firm evidence on the origin of the dances performed at Wellow, but within living memory among the dances performed are the Gypsies Tent, Single Plait, Double Plait, Spiders Web, Circling and Amo Amas. As well as being a much loved event by local people, Wellow's maypole celebrations attract many visitors, sometimes numbering up to 2,000, depending on the weather.

#### PLOUGH MONDAY FESTIVITIES

Until the early part of this century, it was traditional for the Plough Monday play to be performed by the young men of Wellow. The 'plough boys' would go from door to door, on the second Monday in January, acting out the play, and would be rewarded with refreshments for their efforts.

The Plough Monday play was not peculiar to Wellow, as the tradition is known to have been popular in Lincolnshire. The words were handed down from generation to generation, with local variations, and it is thought that this particular festivity came to an end in Wellow at about the time of the first World War.

PLOUGH MONDAY

WELLOW

2nd Monday in January

First man knocks, opens door and walks in saying:

In comes I, who's never been before  
With five jolly actors at your door  
Some can whistle, some can sing,  
With your good consent, we will walk in.

3rd Man.

In comes I, Dick, Be-elzebub,  
On my shoulder I carry my club  
In my hand a whit-leather pan  
Don't you think I'm a very good man.

4th Man.

In comes I the thresher  
I've fought and threshed till I got down  
to the battle of Waterloo  
And so, old Thomas, I'll fight you.

They fight, in which Thomas kills the other.

5th Deb Jane.

Oh Tom, Oh Tom; what has thou done,  
Thou'st been and slain my only son,  
If I live in hopes, I'll buy five ropes  
And tie my nose to a manger

They call the Doctor.

Come in Doctor. How long have you been a doctor? and where have you been.

Doctor: In England, Ireland, Scotland, Spain,  
Over the hills and back again.

What can you cure?

Ipsey, pipsey, palsy, gout, pain within  
and pain without, set a leg or draw a tooth,  
and raise the dead to life again.

Lifts dead man up.

Song at finish.

Good masters and good mistresses  
As you sit by your fire  
Remember us poor ploughboys  
Who plough in mud and mire.

Collection and food.

1a Photographs

1b General view of Jordan Castle site.

This composite photograph shows the ancient earthworks of Jordan Castle, which lie approximately half a mile north of Wellow village. These are the remains of a medieval moated site, where Richard Foliot (the father of Jordan) was given licence by King Henry III to 'crenellate' or fortify his manor house of Grimston in 1264. (The village of Grimston has since disappeared). He also had free warren and secured the grant of a market at Wellow. In 1299, Richard Foliot and his son Jordan died within five weeks of one another, and the inheritance was divided between Richard's two daughters, one of whom married Hugh de Hastings of Norfolk. The manor of Grimston fell to Sir Hugh Hastings, and presumably Jordan Castle then ceased to be occupied. Only the approximately circular earthwork now exists, but it is interesting to note that at some point the whole area was ploughed for arable land, as ridge and furrow is clearly visible over the whole site including the inner fortified circle. Today the earthworks are on private land, a part of Jordan Castle Farm, and are a scheduled ancient monument.

2 Part of Sanderson's Map 1835 twenty miles around Mansfield, drawn in great detail showing Wellow and the surrounding countryside.

3a Part of the Enclosure Map of Wellow 1842 showing how the land was divided between such people as the Earl of Scarborough and The Duke of Newcastle.

Enclosure came late to Wellow. The land immediately around Wellow had been enclosed earlier, so it was the outlying areas, woods and waste that were next enclosed by the 1842 award.

3b A section from the typed-copy of Wellow enclosure award. Stated in the script is "one public carriage road or highway called the Wellow and Eakring Road".

4 Wellow Tithe Map AT 143

5 Ordnance Survey Map of Wellow dated 1885. Scale 25inch to 1 mile.

6 A grant of a messuage and croft in Wellow (Wellagh) from George Elliott, a yeoman to Stephen Camme, also a yeoman. 13 January 1597/8 DDT 87/5

7 Presentments made to the manor court in October, 1641 DDBO 47

The pains (fines) imposed under Wellow's manorial bye-laws had their origin in the medieval system of local government. By this system the lord of the manor, through the manorial court, exercised strict controls over many aspects of local life, including the regulation of bread and ale, the care of hedges, and the taking of wood for building or fuel supplies.

8 Parish Baptisms for 1791 PR 19002

9. Inventory of the 'Goods and Chattels' of Frances Blyton, 1724 PRNW (Retford)  
 A True and Perfect Inventory of the Goods and Chattels of Frances Blyton  
 late of Wellow. Spinster Deceased taken October 2nd 1724.

|                                    | £   | s  | d |
|------------------------------------|-----|----|---|
| Imprimis. Purse and Apparell       | 5   | 02 | 0 |
| A Bed and Bedding upon it          | 1   | 10 | 0 |
| Land Iron and other Iron things    | 0   | 5  | 0 |
| 2 Chairs and Long Settle           | 0   | 3  | 0 |
| Brass and Pewter                   | 0   | 7  | 6 |
| Linnen                             | 0   | 10 | 0 |
| Bills and Bonds                    | 100 | 0  | 0 |
| 2 Looking Glasses and Books        | 0   | 10 | 0 |
| Boxes Trunks and other Hustlements | 0   | 10 | 0 |
|                                    | 108 | 17 | 6 |

Appraised by us  
 Wm. Challand  
 William Levertton

- 10 The will of Charles Cougill, fellmonger. 13th January, 1806.
- 11 The last Will and Testament of John Hart, Harness Maker, of Wellow  
 February, 1835. PRNW

Information from the parish register tells us that John Hart married Elizabeth Turner, also of Wellow on the 17th December 1799. She subsequently bore him six children. Their first born was a son, Thomas, who was baptised on 7th September, 1800, but died aged two years in September, 1802. In the same year their daughter Mary was born, and daughters Elizabeth, Sarah and Ann followed in 1804, 1807 and 1809 respectively. Their only other son, William, was born in August 1811, but perhaps the strain of childbearing had proved too much as John's wife, Elizabeth, died the following June aged 34 years.

Obviously, life would have been very difficult for a widower with five children under ten years old, so John engaged a housekeeper, Ann Cutts, to look after his family. It can be deduced from the will that eventually Ann and John lived together, and Ann bore him a son, John. However, they never legalised their position, and it can be seen from the Will that John Hart was very concerned about the welfare of Ann and her children (some of which were perhaps not John Hart's) and was insistent that provision of three shillings a week for her board be given presumably to avoid destitution, by his son William.

- 12 A page from a parish accounts book, showing disbu(r)sment(s) ie, payments of Wm. Cougill and Wm. Walker, overseers of the poor, from April, 1819 to April, 1820 PR 19033

From Elizabethan times onwards parish overseers bore the brunt of responsibility for the poor. Families who fell on hard times would appear again and again in the parish accounts, as for example did the Parnell family of Wellow between 1813 and 1822. On the page shown 1s. 6d. was paid on the 18 June to mend Parnell's smock frock and on the 24 August, a payment was made for 'Cloth for coat Parnell and Wescoat'.

- 13 Extract from the Church Wardens Account book for the year ending Easter 1871. PR 19,034 Church Accounts.

An interesting item from the accounts is the 7 shillings paid for ale, for the bell ringers. This originates from when Lady Waldne, a guest at Wellow Hall became lost whilst walking in Wellow woods, she found her way back to the village by following the sound of church bells. In gratitude to the bell ringers she bequeathed £14.00 to the church to be invested and the interest paid to the ringers, providing the bells are rung on the 19th September each year in her memory, this custom still exists today.

- 14 The settlement examination of William Blyton, 11th June 1785 PR 12,192

William Blyton, son of William and Alice Blyton, was baptised at Wellow on 21st June 1752. He would therefore be 33 years of age at this Examination. He did not marry at Wellow, nor were the three children mentioned born there. Under a 1662 Settlement Act permanent residence in a parish was limited to those people born in a particular parish, or who had served a full apprenticeship, worked for 52 weeks or served in a parish office. If a person was not entitled to a 'settlement' they would be moved to their last place of legal settlement. In order to establish a person's right to settle in a parish it was sometimes necessary for an enquiry ie 'examination' to be held, usually before the justices of the peace.

- 15 Historical background to Whites directory entry, 1864

- 16 Typescript copy of Wellow school foundation deed. PR 19,050

Wellow school stands between The Durham Ox public house and Rock House Newark Road. It has not been used as a school for many years but it is still in use for certain functions, so is still part of village life.

In the year 1855 the Duke of Newcastle granted a piece of land for the purpose of building a school. The school was for the poor children, also the adults of the parish. It was not to be used for any other purpose, to be granted in trust to the minister and churchwardens for the parish of Wellow. The minister of Wellow was Frederick Savile Lumley. The documents for the land were signed by him 9th January, 1856.



17 Census Returns for 1851.

18 Rufford Estate Sale Catalogue Extract 1938.

Probably the most important event in the recent history of the village of Wellow was the sale of Rufford Abbey and its estate on 22nd November, 1938. A large proportion of the farms, buildings and dwelling houses in the village were owned by the estate, so when death duties forced the Savile family to sell Rufford Abbey and its estate of over 15,500 acres, it had a profound effect on the locality. The extract from the sale catalogue (page 40) gives some idea of the scope of the auction. Many farms and buildings were bought by the existing tenants, but the sale also provided opportunities for others outside the village bringing new inhabitants to the village.

The sale also made possible the rationalisation of land holdings as the Estate regrouped various fields before the sale. This is why, for instance, Church Farm appears to be held by four people. Until this time, holdings had been scattered around the village, probably as a hangover from the days of the Open Field system, and so in 1938 they were rearranged to largely provide farm holdings in more manageable blocks of land.

19 The appointment of a gamekeeper by Lord Savile of Rufford, to cover surrounding villages including Wellow. 1st March, 1758      DDSR 218/12

20 Rufford Hounds.

The kennels were originally near Rufford Abbey in the Park. The Rufford Pack of Hounds was sold by auction in 1872 and was taken to Gonalston for the auction. This was for ease of access as Gonalston lies between Lowdham and Thurgarton Railway Stations. In 1904 a new complex was built at Jordan Castle, Wellow for the Rufford Hunt.

In 1950 the Rufford Hunt amalgamated with the Grove and is now known as the Grove and Rufford Hunt. The kennels at Jordan Castle were sold at that time.

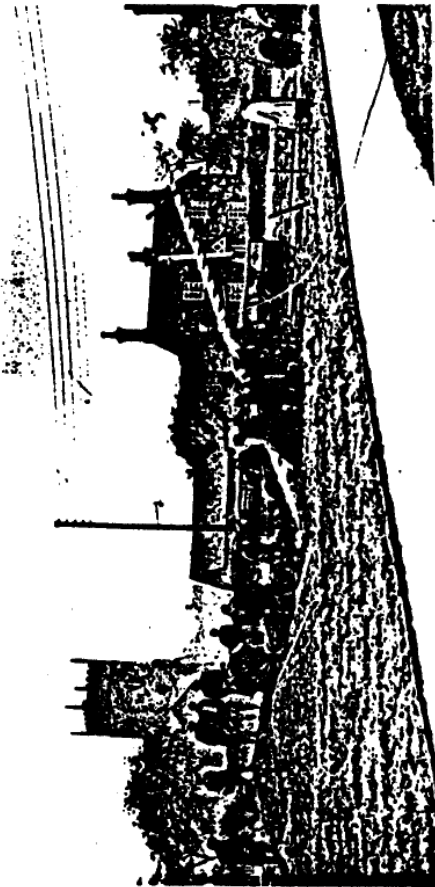
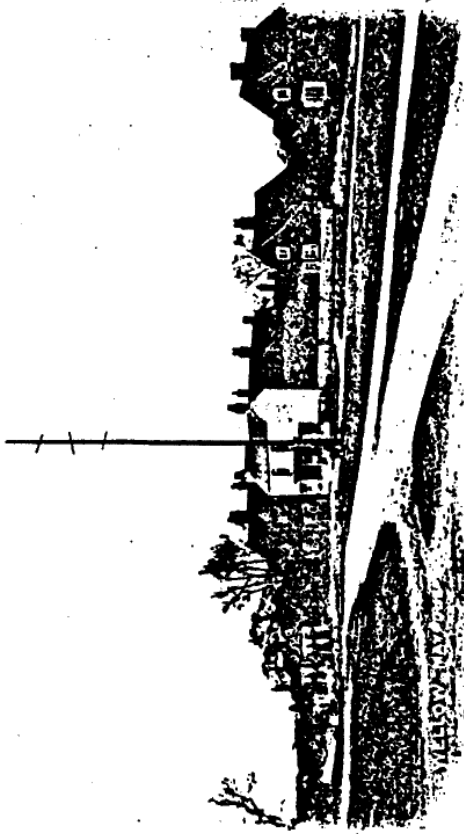
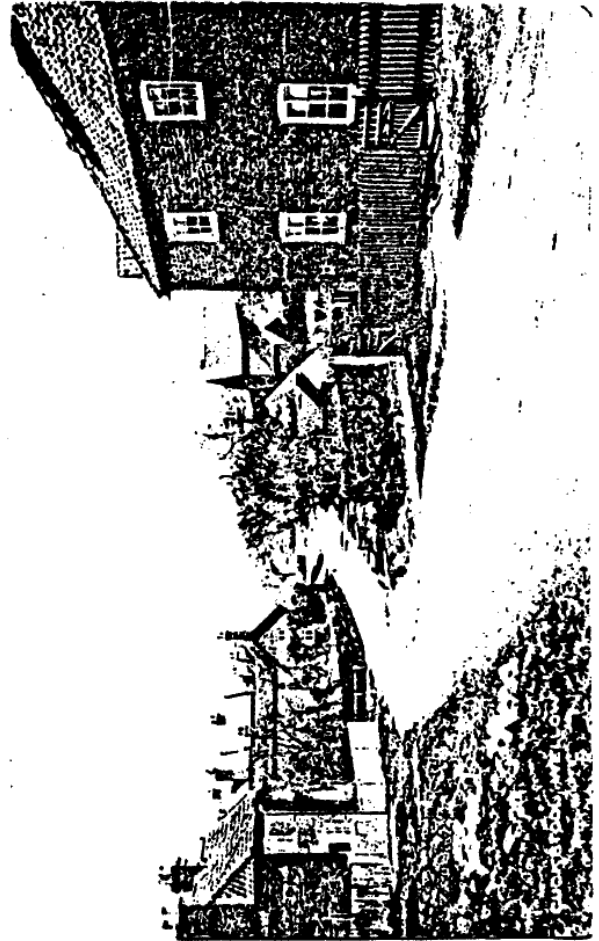
1a



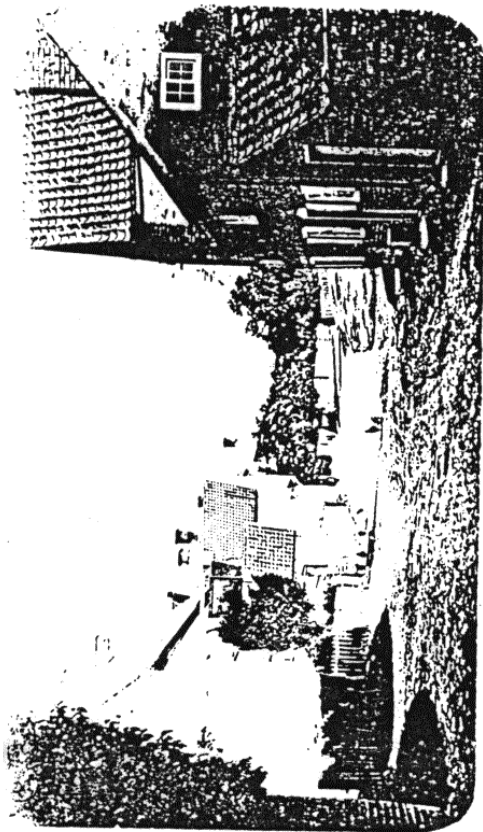
*The Village Green showing the very tall Maypole  
once made of wood now of stainless steel.*



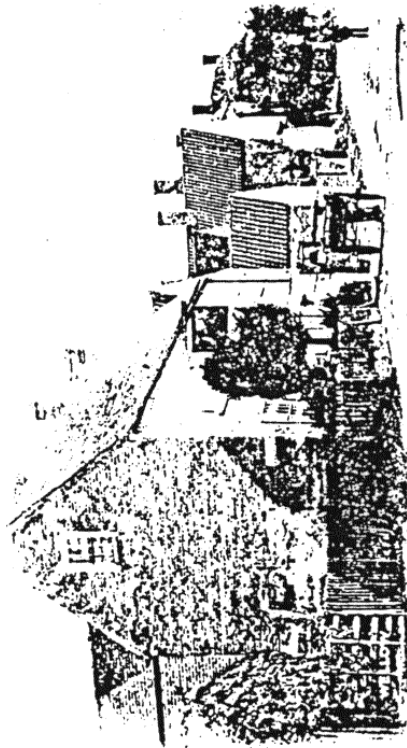
*St Swithens Church dating back to 12th Century.*



"The Mansfield Reporter"  
PHOTOGRAPHIC DEPARTMENT

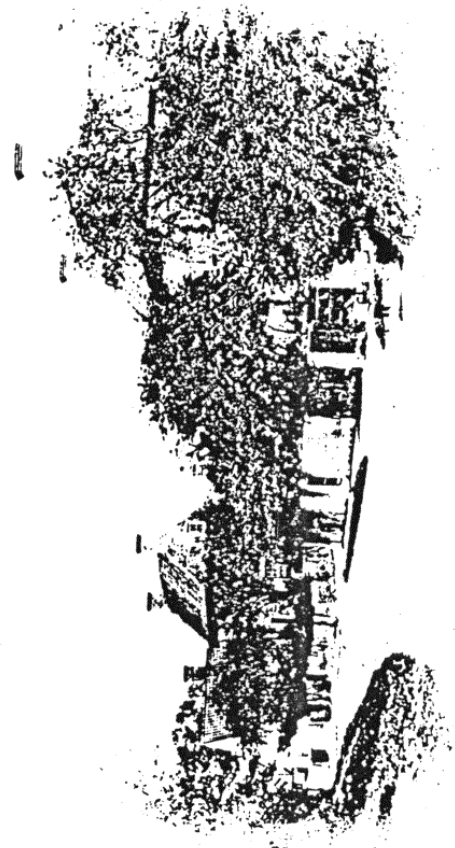


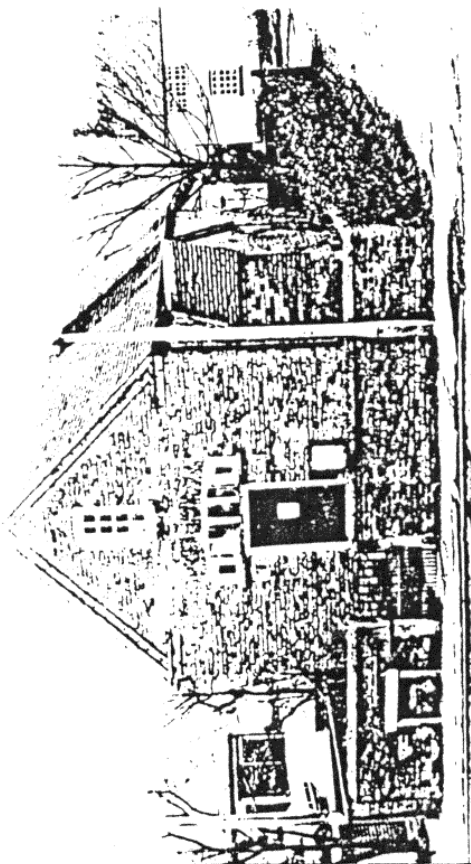
WELLOW



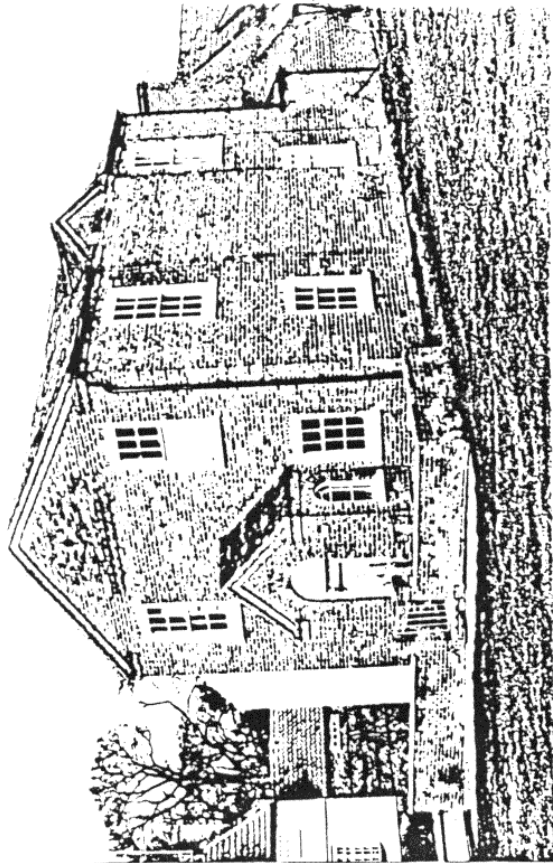
WELLOW

*Views of Wellow in bygone days showing the idyllic and rural life of the past.*

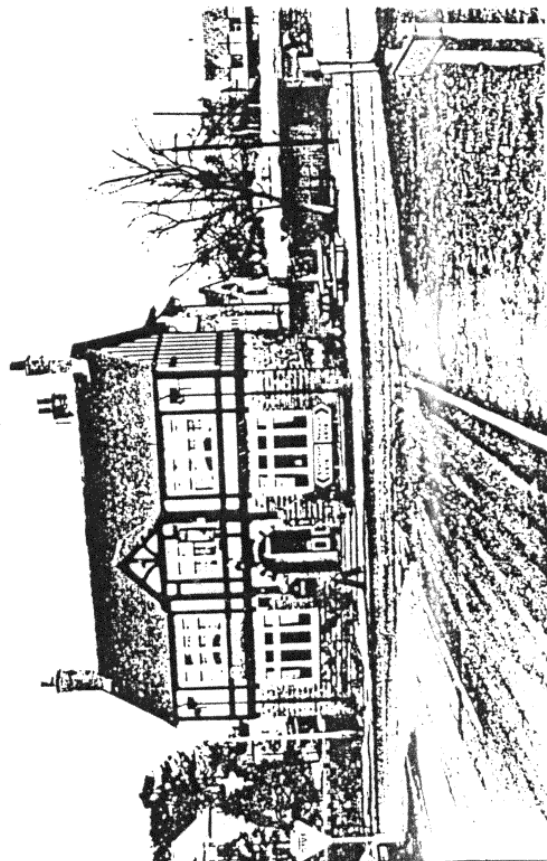




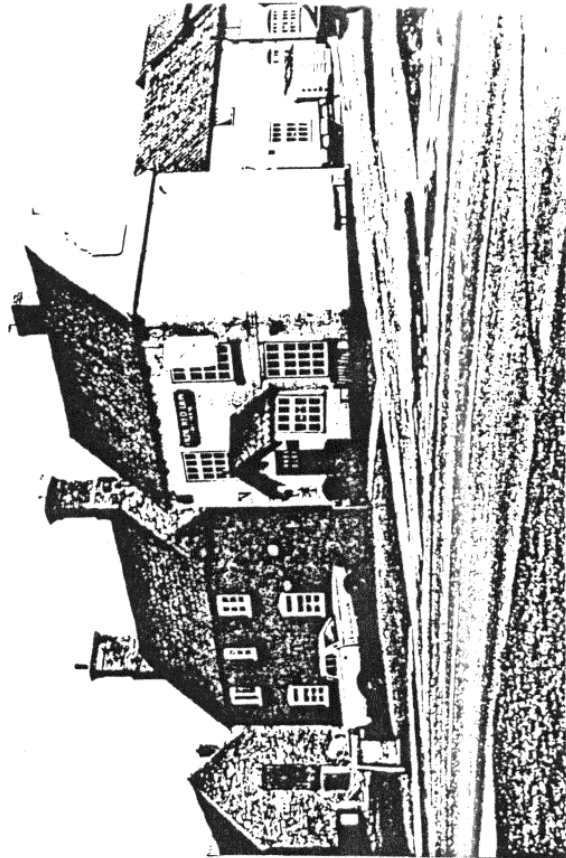
The Old School Room now used as a meeting hall.



The Methodist Chapel on the Village Green  
now a private house.

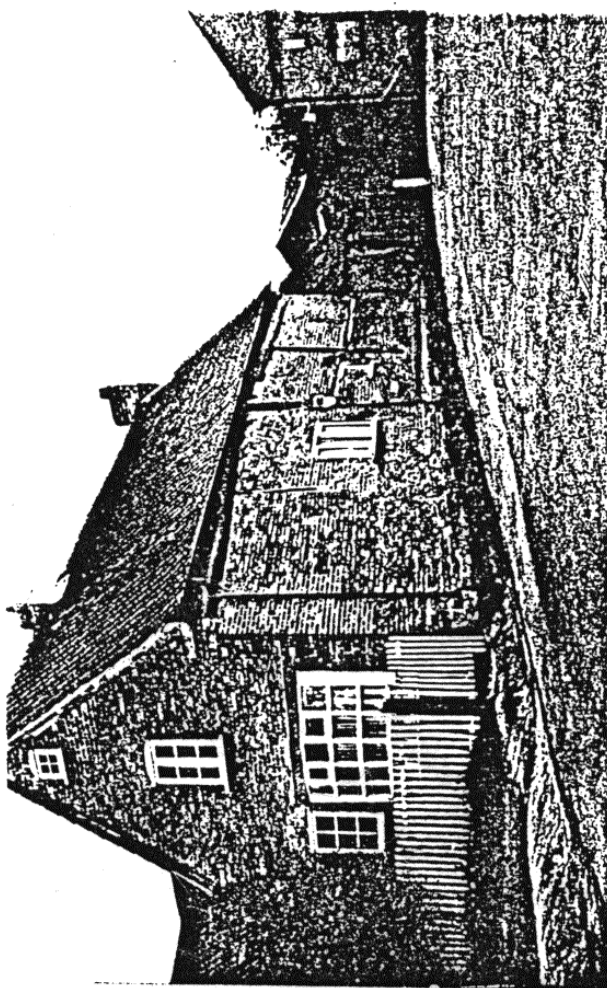


The Old Red Lion Inn now a private house.

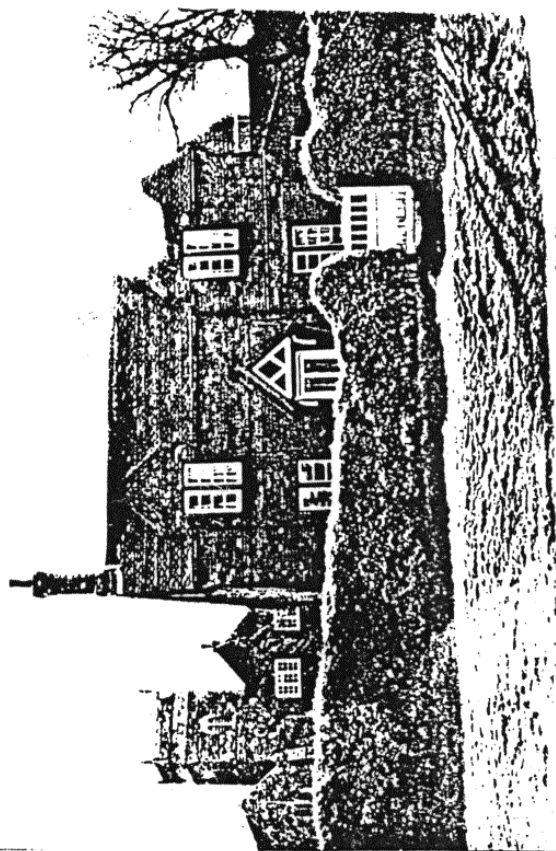


The Old Red Lion Inn now a private house.

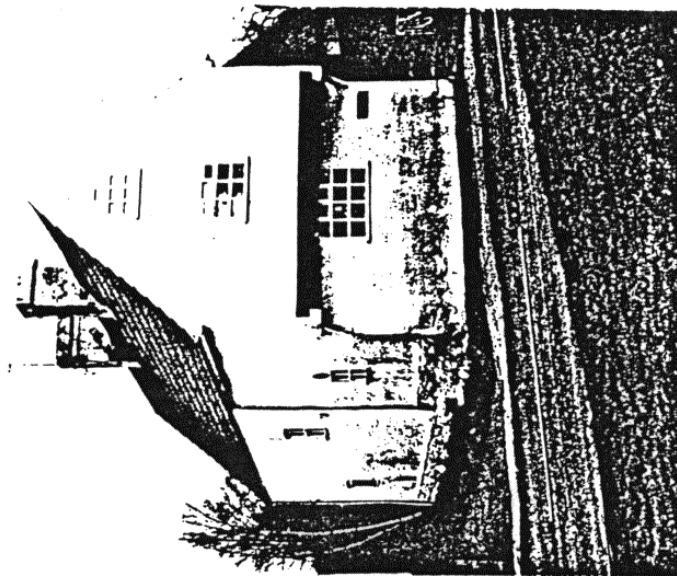
Green Cottage and Rock House  
are probably the oldest houses  
in the Village dating back to  
the 17th Century.



Green Cottage facing the Maypole.

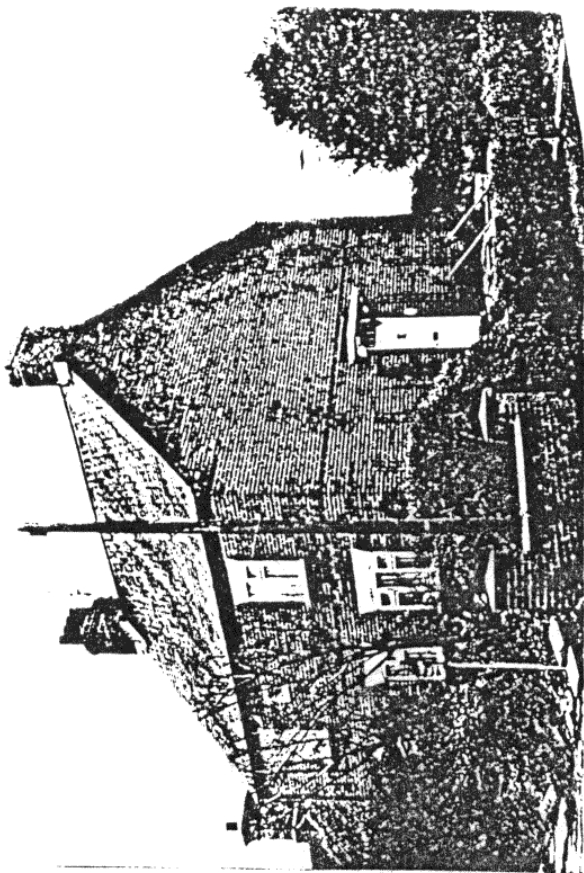


Rock House facing the Village Green.

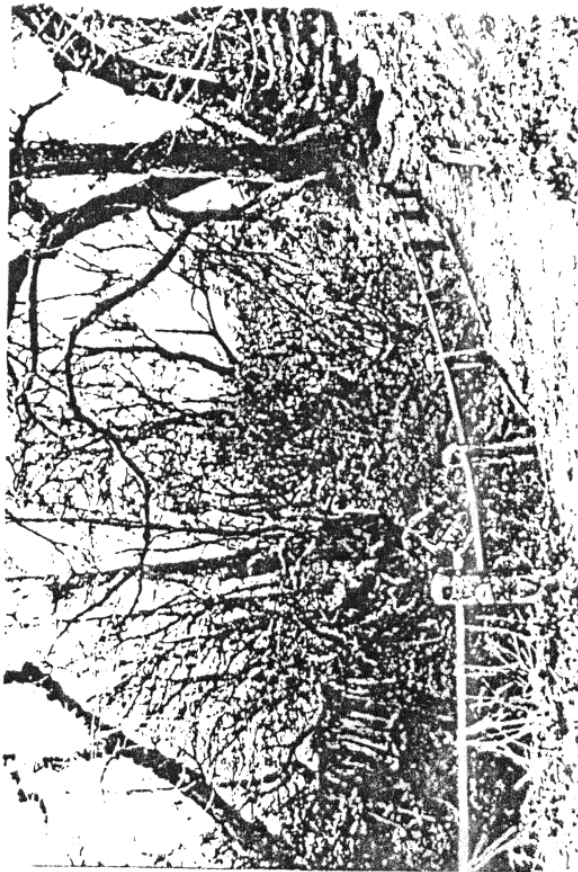


Rock House facing the  
Village Green.





*The Old Vicarage on Potter Lane*



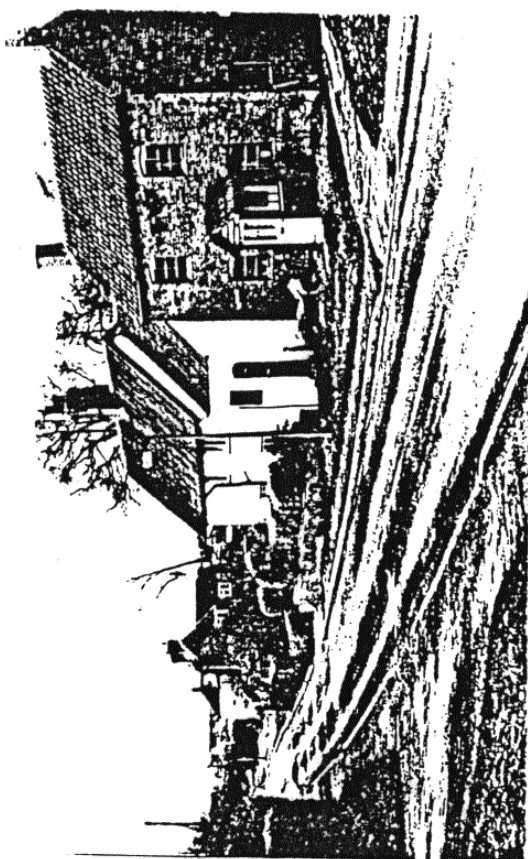
*A view of Common Dike from Potter Lane*



*One of the Old Wells at a cottage on Potter Lane*



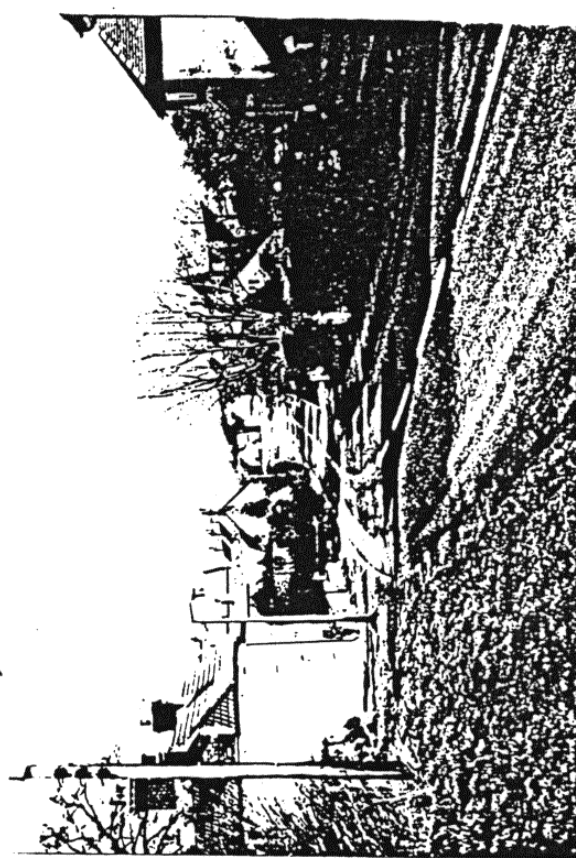
*A view looking down Potter Lane*



*A view of cottages on the Eaking Road looking down from Willow Green.*

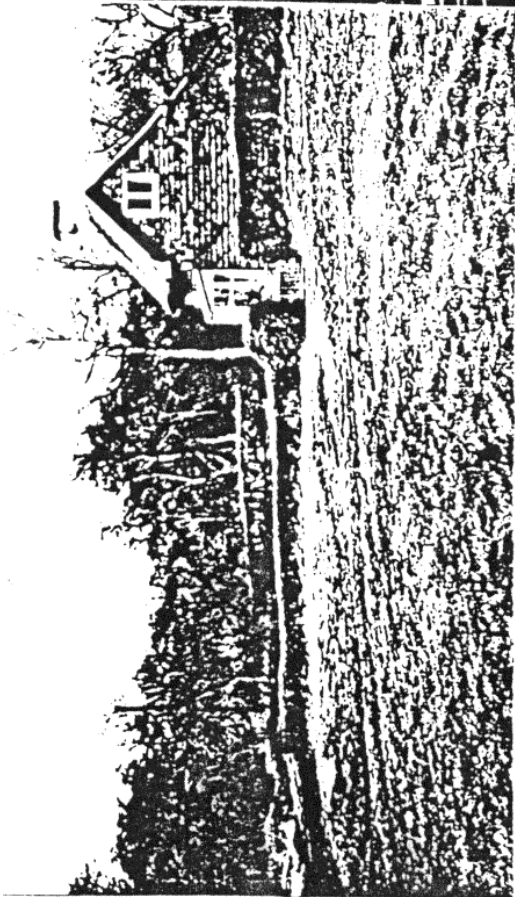


*Cuckerstool cottage + Ashdale cottage on the Eaking Rd*

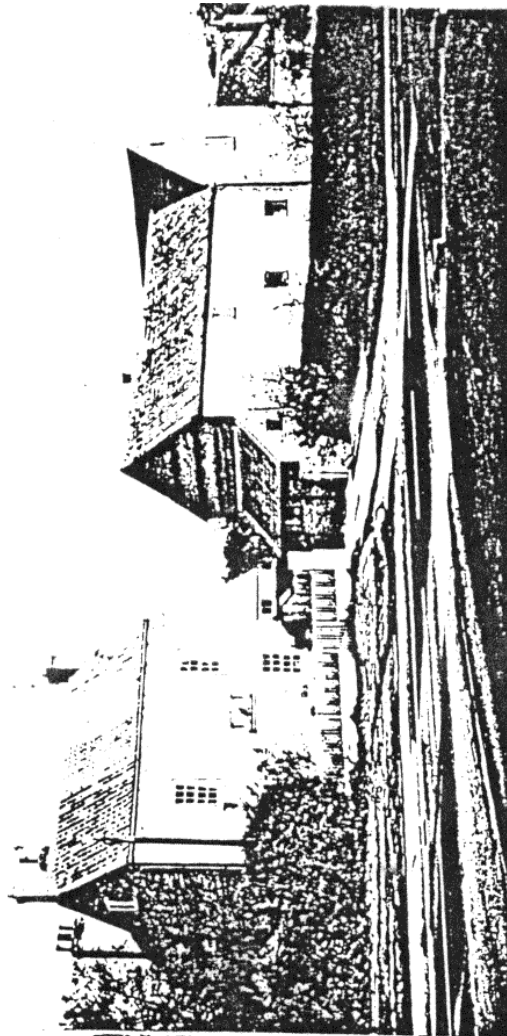


*A view looking into Willow from Eaking Rd.*

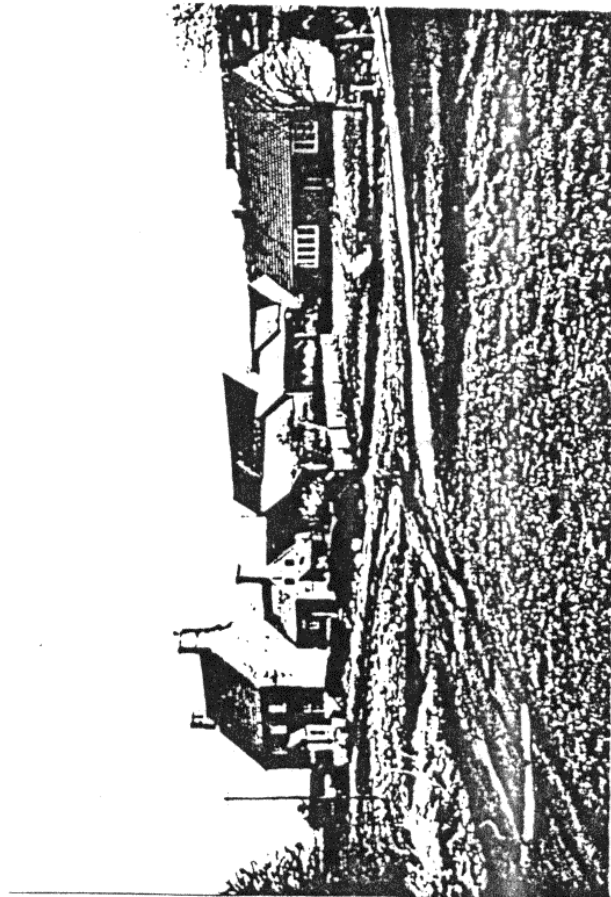




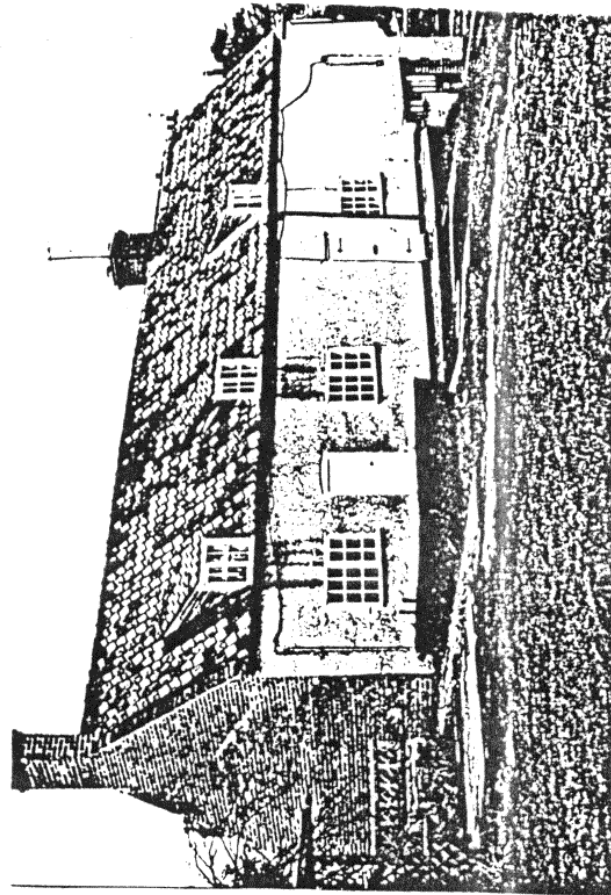
Slag Cottage situated on the back Green.



Lodge Farm on the Green, now a private house.



Park Farm situated on the back Green



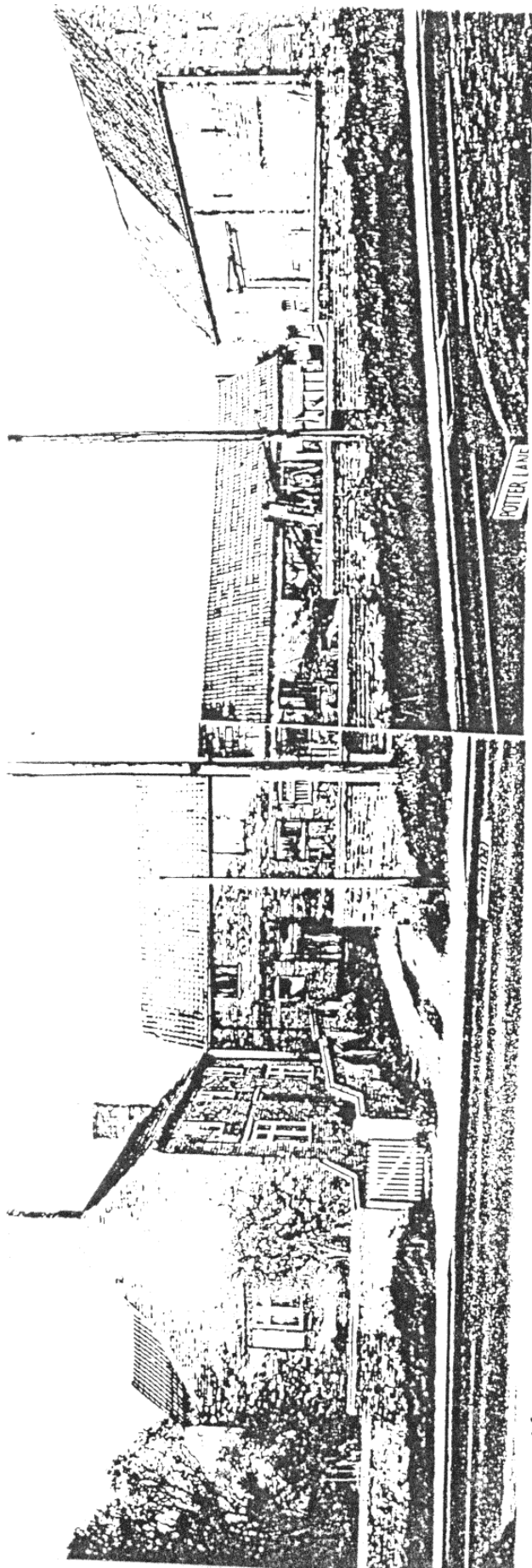
Cottages looking over the Villan.



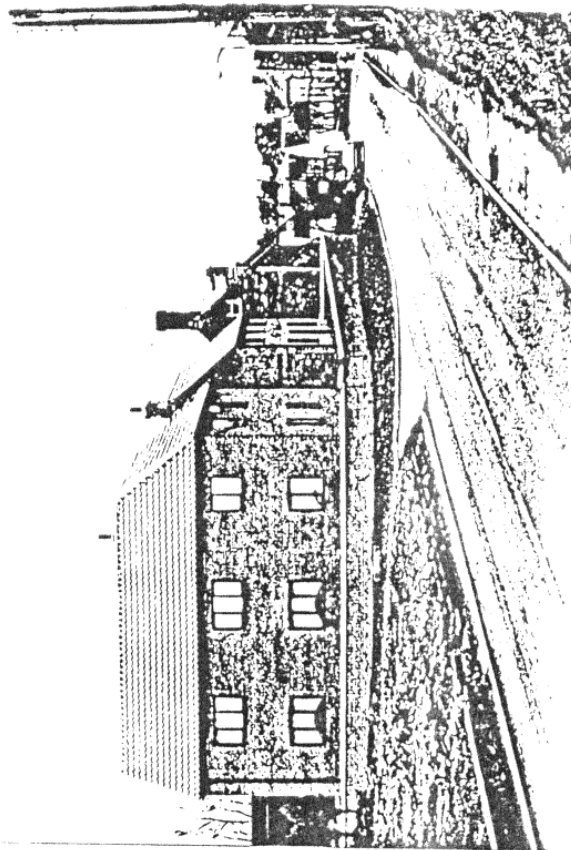
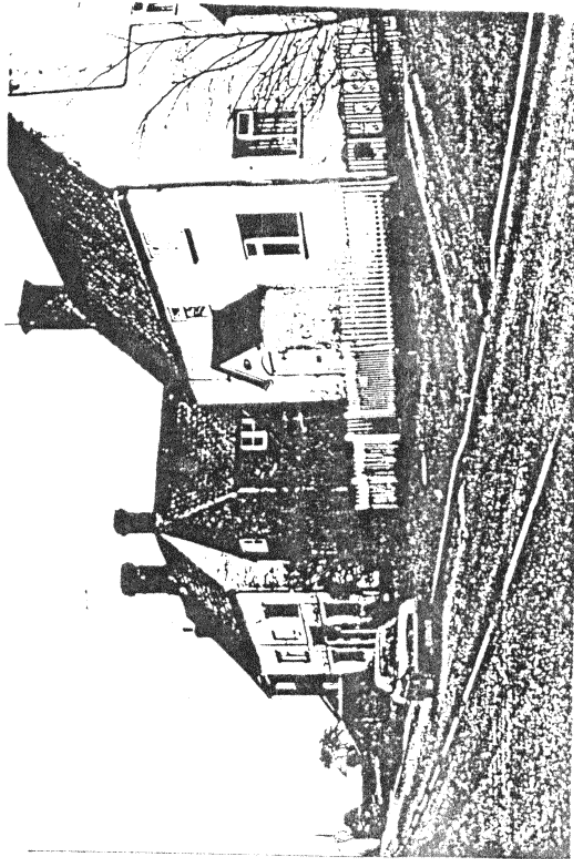
*Wellow Hall once a hospital and dispensary  
for the poor.*



*Wellow House School former home of the  
Rufford Abbey estate agent.*



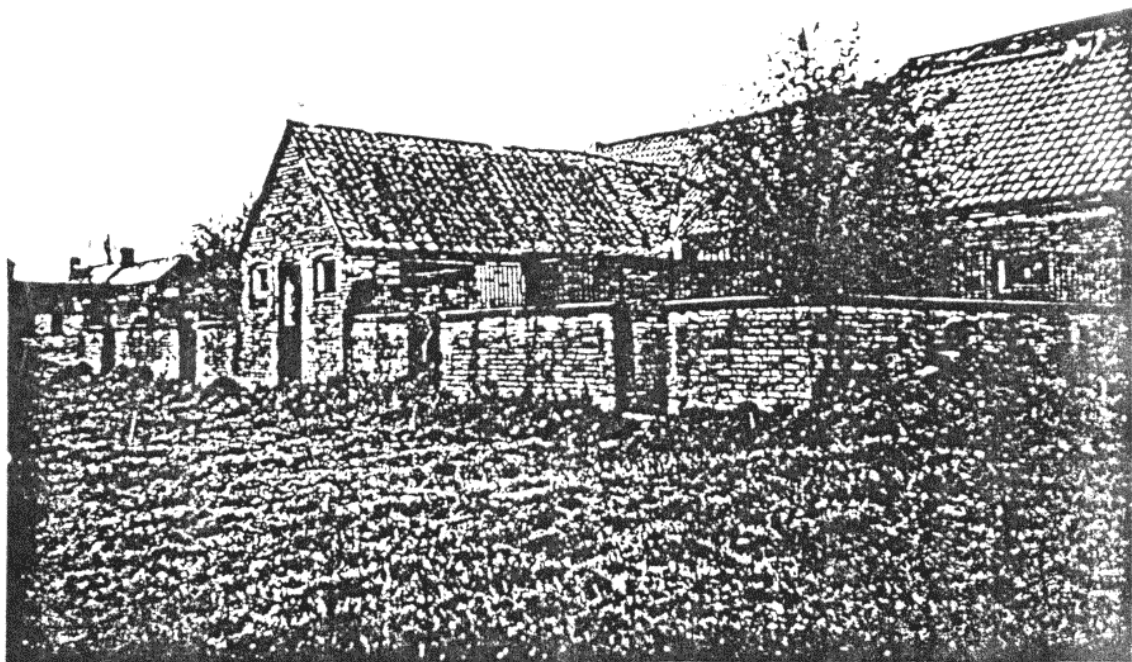
*Moat Farm at the junction of Potter Lane and The Newark to Olarton Road A616.*



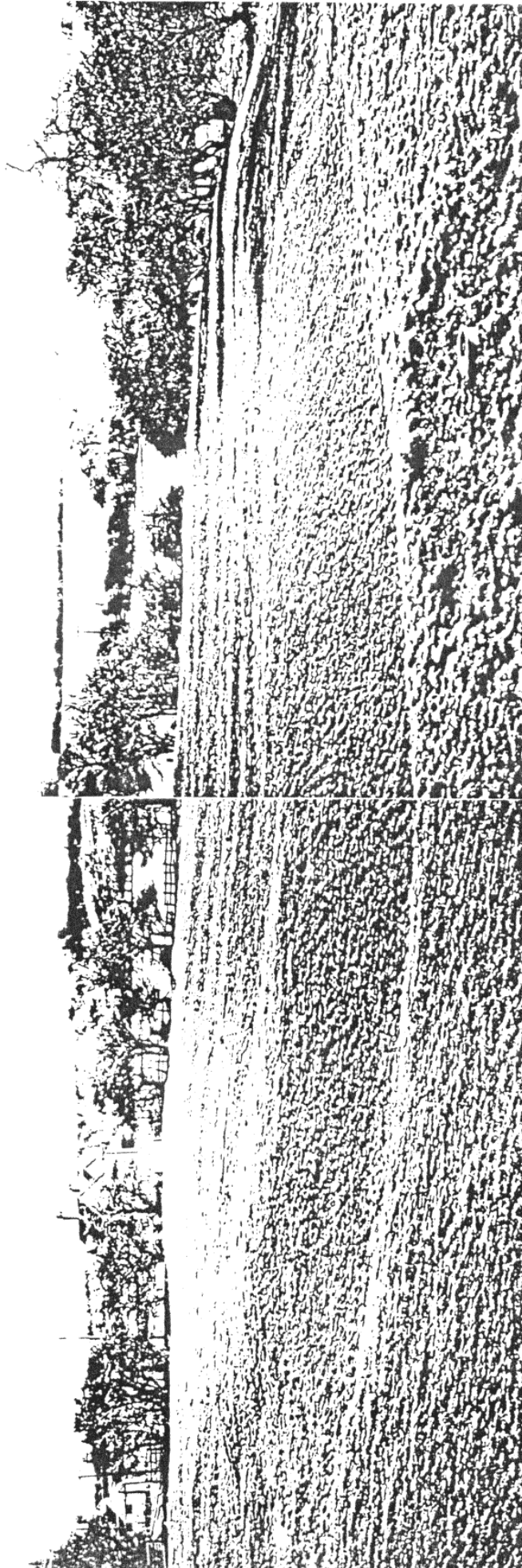




The Huntsmans Lodge at Jordan Castle Farm  
once the home of the Head Huntsman who  
looked after the Rufford Hounds.



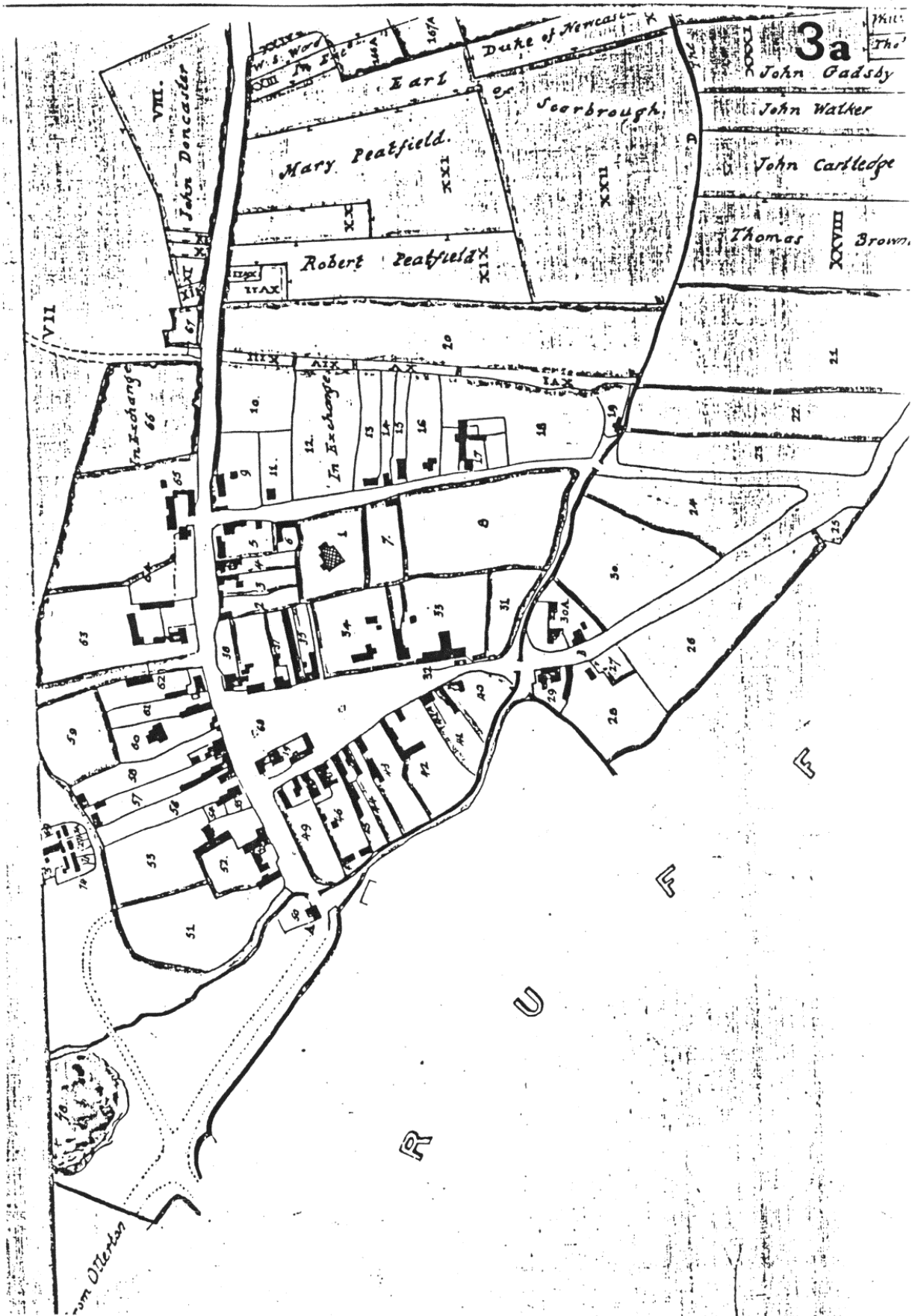
The Old Kennels next to the Huntsmans  
Lodge, which housed the fox hounds.



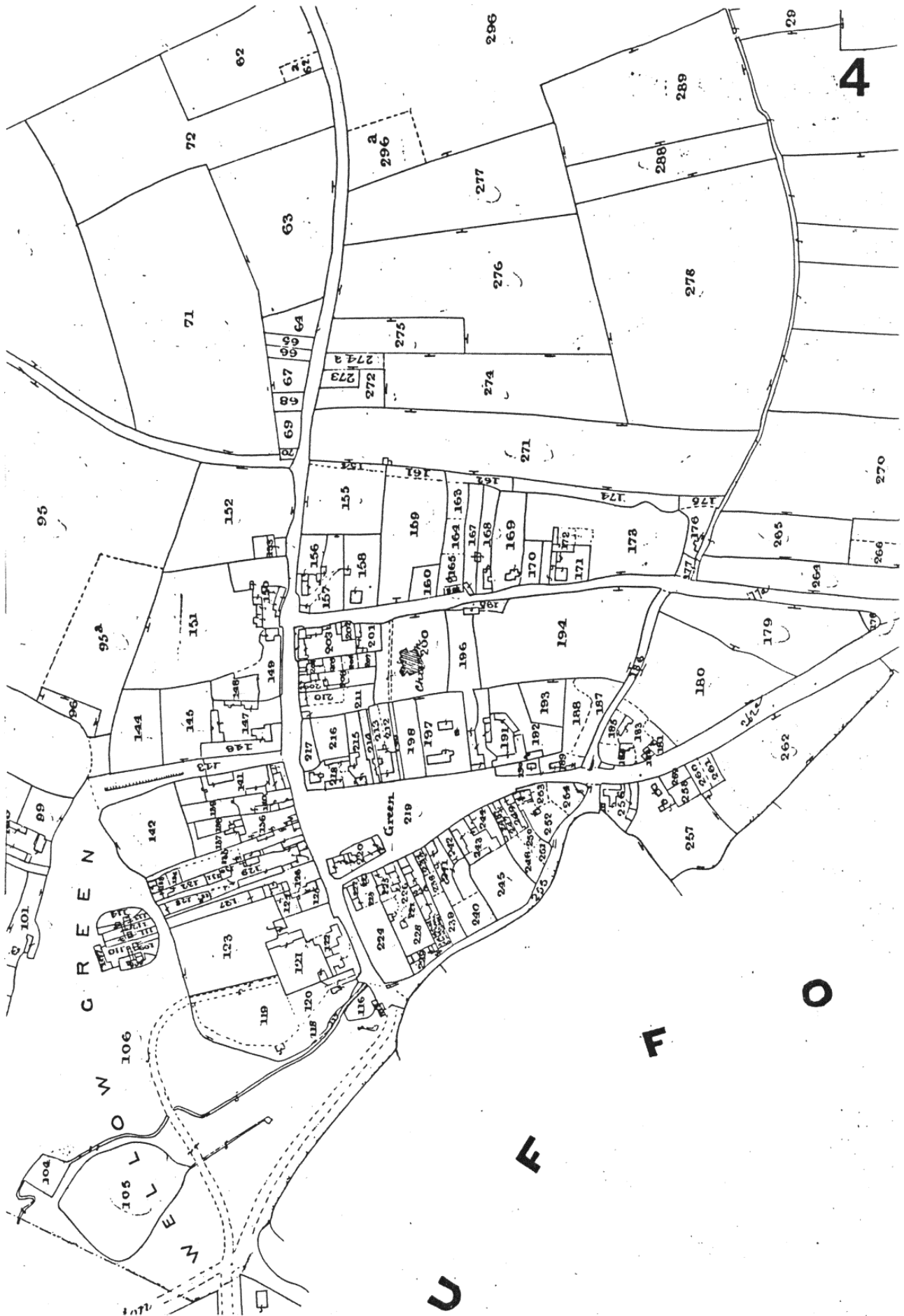
Jordon Castle mound once the site of an Ancient Castle  
with Splendid views across open countryside. In the back-  
ground Huntsmans Lodge and Stables.

1b





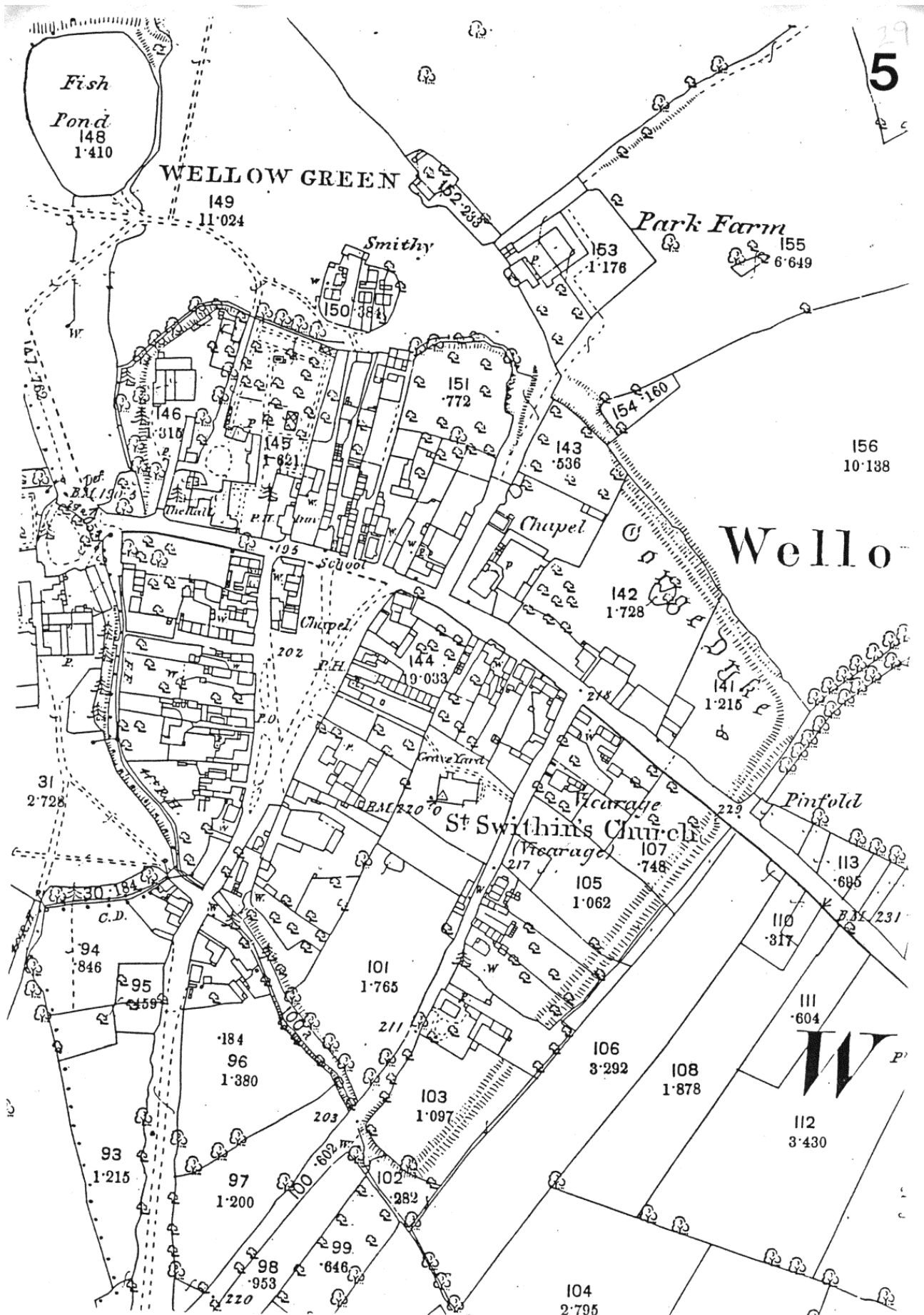






36

of which I am by the said heretofore in part recited Acts of Parliament agreements documents and instruments or any of them authorized and required to make my Award in manner and form following (that is to say) in the first place I do declare that the several descriptions and numbers mentioned in this my Award and in the Allotments and exchanged lands herein set out refer to the numbers specified and marked on the map or plan annexed to this Award AND I the said Thomas Smith Moolley as such Commissioner as aforesaid have set out and appointed and do hereby set out and appoint and award the following public carriage ways and highways to be from time to time and at all times hereafter used in over upon and through such of the lands and grounds hereby divided allotted and inclosed as are hereinafter particularised which I deem to be requisite within the said Parish of Wellow (that is to say) ONE PUBLIC CARRIAGE ROAD OR HIGHWAY called THE WORSKOP and KILKHAM TURNPIKE ROAD leading from the township of Ollerton in the County of Nottingham at the western end of Wellow Green in its present track and of its various existing widths to its entrance into the Township of Oulton ONE PUBLIC CARRIAGE ROAD OR HIGHWAY called THE WELLOW and EAKING ROAD leading from and out of the Parish of Wellow aforesaid in its present track and of its various existing widths to the Southern corner of an ancient inclosure the property of His Grace the Duke of Newcastle called or known by the name of the Hays Close Number 21 on the map or plan of the said Parish of Wellow heretofore annexed and thence continuing to the entrance of the said Township of Oulton at Gallow Hole Bridge of the width of thirty five feet where it passes through and over lands hereby divided and inclosed and of its present width where it runs between old inclosures in the Parish of Wellow aforesaid and the boundaries of the Liberty of Euford in the said County of Nottingham AND I the said Commissioner have set out and appointed and do hereby set out appoint and award the following Public Footpath to be from time to time and at all times hereafter used in over upon and through such of the lands and grounds hereby divided allotted or inclosed or inclosed which is hereinafter particularised and which I deem to be requisite within the said Parish of Wellow that is to say ONE PUBLIC FOOTPATH called the WELLOW and LARROU FOOTPATH of the width of five feet leading from the North eastern corner of a certain ancient inclosure the property of the said Duke of Newcastle called Great Orlington Number 136 on the said map or plan over the Southern corner of an allotment herein made to the Right Honourable the Earl of Scarborough Number 1 on the said map or plan to its present entrance into a certain ancient inclosure called Long Bang in the property of the said Duke of Newcastle and hereinafter awarded in exchange to the said Earl of Scarborough AND I DO ORDER AND DIRECT that in all places where the said Public Footpath shall pass over and across a fence or ditch the owners or occupiers of the allotments to which such fence or ditch respectively belongs shall place proper and convenient foot bridges planks and stiles thereon and shall at all times hereafter keep the same foot bridges planks and stiles in good repair AND I the said Commissioner have also set out and appointed and do hereby set out appoint and award the following private carriage and drift roads to be from time to time and at all times hereafter used in over upon and through such of the lands and grounds heret divided allotted and inclosed as are hereinafter particularised which I deem to be requisite within the



[illegible]

|  |  |
|--|--|
| <p> <i>Pranga</i><br/> <i>Pranga</i><br/> <i>Pranga</i> </p> | <p> <i>Pranga</i><br/> <i>Pranga</i><br/> <i>Pranga</i> </p> |
|--|--|

Court holden for the right W(o)r(shi)pfull William Samuel att Welly the 21 of  
 October 1641. First Wee presentt Henry Walker the elder for breaking the size  
 of bread and ale.....4d  
 John Read for the like.....4d  
 Wee present James Walgden for his pinfold beinge in default.....6d  
 Henrie Walker younger for the like.....6d  
 Thomas Whitlome for the like.....6d  
 Wee present Edward Baites of Ampton for his man making a rescue  
 from Lawrence Turner.....12d  
 Wee present John Lund for teatheringe a mare and foale contrary  
 to the paine.....6d  
 John Walkden for the like.....6d  
 William Womble for not plashing the high hedge.....6d  
 Wee present Thomas Whitlome for a gap in the high hedge.....4d  
 William Swinscoe for the like.....4d  
 Wee present Thomas Harris for carryinge wood out of the lords woode..4d  
 Robert Gilbert for the same.....4d  
 Widowe Arney for the like.....4d  
 William Walkden for the like.....4d  
 Thomas Smith of the Church stones.....4d  
 Thomas Chadwicke for the like.....4d  
 Edward Gilbert for the like.....4d  
 Richard Lammin for the like.....4d  
 Richard Gilbert for the like.....4d  
 William Taweleson for the like.....4d  
 Elizabeth Hibbard for the like.....4d  
 Margaret Simson for the like.....4d  
 James Stanfield for the like.....4d  
 William Giniver for the like.....4d  
 Thomas Debell for the like.....4d  
 Thomas Leadbeater for the like.....4d

The document bears the mark of Johannis Lund, 'afferator' (assessor)

Madam de  
Wolley

(Court taken for the right for full for William Saml att-  
Wolley the 21 of Octobr 1641. first week of  
Henry Walker the elder for breaking the fence of broad &  
the



- John Read for the like 4d
- Over present James Walgden for his pinfold bridge in default 6d
- Denise Walker younger for the like 6d
- DD 30 Thomas Whitlome for the like 6d
- 47 Over present Edward Bate of Ampton for his man making a refusal from Lawrence Currier 12d
- Over present John Lund for leathering a man & foale contrary to the game 6d
- John Walker for the like 6d
- William Womble for not plashing the high hedge 6d
- Over present Thomas Whitlome for a gap in the high hedge 4d
- William Swinfor for the like 4d
- Over present Thomas & Davids for carrying wood out of the lands 4d
- Robert Gilbert for the same 4d
- Widow Arney for the like 4d
- William Waltden for the like 4d
- Thomas Smith of the Church-stones 4d
- Thomas Chadwick for the like 1d
- Edward Gilbert for the like 4d
- Richard Sammin for the like 4d
- Richard Gilbert for the like 4d
- William Carole for the like 4d
- Elizabeth Dibbed for the like 4d
- Margaret Simson for the like 4d
- James Stanford for the like 4d
- Steven Stanford for the like 4d
- William Gminor for the like 4d
- Thomas Debell for the like 4d
- Thomas Leadobater for the like 4d

Offer of the  
howing w/1  
John  
dend foreman

Baptisms In 1791.

Elizabeth Daughter of William and Mary  
 Corrigill was baptized January the 4  
 Elizabeth Daughter of Samuel and  
 Sarah Wilson was baptized January 9  
 George Son of William and Jane Denny  
 baptized February the 6  
 Ann Daughter of Richard and Elizabeth  
 Hind baptized March the 18  
 Nanny Daughter of John and Mary  
 Enemy was baptized March the 22  
 Hannah Daughter of Thomas and  
 Fortune Lucas baptized April 7  
 Flora Daughter of Francis and  
 Sarah Foxe baptized May the 29  
 Mary Dau<sup>r</sup> of William and Ann  
 Turner baptized July the 3  
 John Son of Joseph and Elizabeth  
 Hind baptized July the 10  
 Joseph Son of Richard and Mary  
 Harriner baptized July the 10  
 John Son of Will<sup>m</sup> and Mary Johnson  
 was baptized July the 11  
 Elizabeth Daughter of James and Ann  
 Lucas was baptized August the 7  
 Richard Son of Joseph and Mary  
 Moore was baptized August the 7

B.  
 Thomas  
 Simp  
 Richar  
 Bacon  
 William  
 Hanes  
 Sarah  
 Wombe  
 Joseph  
 baptiz  
 Elizab  
 Elizab  
 Richar  
 Hind  
 Joseph  
 Moor  
 William  
 Lucas  
 Emme  
 Clark  
 B.



At Cens and Forfeitt Inventory of the Goods -  
and Chattells of Francis Bylton late of Wellow -  
deceased Spinstre taken October 2. 1724

|                                 |   |   |   |          |
|---------------------------------|---|---|---|----------|
| Impt's Purse and Apparell       | — | — | — | 5:02:0   |
| a Bed and Bedding upon it       | — | — | — | 1:10:0   |
| Land Iron and other Iron things | — | — | — | 0:15:0   |
| 2 Chairs and Longfettle         | — | — | — | 0:3:0    |
| Wash and Towels                 | — | — | — | 0:7:6    |
| Linnen                          | — | — | — | 0:10:0   |
| Bills and Bonds                 | — | — | — | 100:0:0  |
| 2 looking glasses and Hooks     | — | — | — | 0:10:0   |
| Boxes Trunk, & other Trifles    | — | — | — | 0:10:0   |
|                                 |   |   |   | <hr/>    |
|                                 |   |   |   | 108:15:6 |

Appraised by us  
W<sup>m</sup> Challand  
William Goverton



ty of Drettingham folienger I give and Devise unto my daughter Sarah Walker  
 messuages or tenements situate in Wotton aforesaid together with the outbuildings  
 and are now in the occupation of John Wells and John Powell and also all  
 several open fields in Wotton aforesaid And also all that my share or parts or  
 portion in the said County called the Bage Close I hold the same unto the said  
 aged and chargeable with the payment of the several Legacies or sums of  
 several and respective persons hereinafter mentioned that is to say To my  
 Assessor and Elizabeth Ward the sum of ten pounds a piece To Charles Embro  
 and his Congill son of my son William Congill the sum of five pounds a  
 month's wage after my decease also I give and Devise unto my son Edmund  
 tenements and real estate whatsoever not hereinafore devised To hold the  
 same unto the term of his natural life and from and after his decease I give and Devise  
 the children of my said son Edmund Congill lawfully begotten or to be begotten  
 in common (if more than one) and in default of such child or children I give and  
 estate with the appurtenances unto my said daughter Sarah Walker and  
 my said daughter Sarah Walker sole executrix of this my last will and  
 this thirtieth day of January in the Year of our Lord one thousand eight  
 hundred and thirty six published and declared by the said Charles Congill the testator  
 in his presence at his request and in the presence of with other lawful

William Stithen

Richard J. Warner



This is the Last Will and Testament of me Charles Coughill of Wellow in the County of Nottingham fellmonger. I Give and Devise unto my daughter Sarah Walker the wife of John Walker of Wellow aforesaid farmer All those my two messuages or tenements situate in Wellow aforesaid together with the outbuildings yards gardens ground and premises thereto adjoining and belonging as the same are now in the occupation of John Wells and John Powell and also all parcel of arable meadow or pasture Ground situate lying and being in Ollerston in the said County called The Sage Close To hold the same unto the said Sarah Walker her heirs and assigns for ever subject nevertheless and charged and chargeable with the payment of the several legacies or sums of money hereinafter mentioned which I do hereby Give and Bequeath unto the several and respective persons hereinafter mentioned that is to say To my Grandaughter Mary Rogers the sum of ten pounds To my daughters Ann Ashmore and Elizabeth Ward the sum of ten pounds a piece To Charles (Emblow?) Son of Phoebe Cocking the sum of ten pounds and to my Grandson Charles Coughill son of my son William Coughill the sum of five pounds all which said legacies I will shall be paid at the end of twelve calendar months next after my decease Also I Give and Devise unto my Son Edmund Coughill all and singular other my messuages Cottages Lands Closes Hereditaments and real estate whatsoever not hereinafter devised To hold the same unto him the said Edmund Coughill and his assigns for and during the term of his natural life and from and after his decease I Give and devise the same and every part there of unto all and every the Child and Children of my said son Edmund Coughill lawfully begotten or to be begotten and to his her and their theirs and assigns for ever to take as tenants in common (if more than one) and in default of such child or children I Give and Devise the said messuages Cottages Lands Closes Hereditaments and real estate with the appurtenances unto my said daughter Sarah Walker and to her heirs and assigns for ever and I do hereby constitute and appoint my said daughter Sarah Walker sole executrix of this my Last Will and Testament In Witness whereof I have hereunto set my hand and Seal this thirteenth day of January in The Year of our Lord one thousand eight hundred and six Charles Coughill

his mark + and seal

Signed sealed published and delivered by the said Charles Coughill the Testator as and for his Last Will and Testament in the presence of us who in his presence at his request and in the presence of each other have subscribed our Names as Witnesses to the same Geo. Flower - William Kitchen - Richard + Warriner  
his mark

This is the Last will and Testament of me Charles Congill of Wethers in the County of  
 the wife of John Walker of Wethers aforesaid I do hereby give and bequeath unto my two un-  
 dermentioned garden ground and premises thereto adjoining and belonging as the  
 those my several pieces of arable land situate lying and being in the  
 parcel of arable meadow or pasture ground situate lying and being in the  
 Sarah Walker her heirs and assigns for ever subject nevertheless and to  
 Money hereinafter mentioned which I do hereby give and Bequeath unto to  
 Granddaughter Mary Rogers the sum of ten pounds To my daughter Ann  
 Son of Phoebe Coking the sum of ten pounds and to my grandson F  
 which said Legacies I will shall be paid at the end of twelve Calendar  
 Congill all and singular other my messuages cottages lands tithes &c.  
 same unto him the said Edmund Congill and his assigns for and during  
 the same and every part thereof unto all and every the Child and  
 and to his her and their heirs and assigns for ever to take as tenants  
 Under the said messuages cottages lands tithes &c. and to him  
 to his heirs and assigns for ever and I do hereby constitute and appoint  
 Testament In Witness whereof I have hereunto set my hand and seal  
 hundred and six - Charles Congill (Ld)  
 as and for his Last will and Testament in the presence of us the  
 subscribed our Names as witnesses to the same J. H. Flower

This is the last Will and Testament of me John Hart of  
Wellow in the County of Nottingham Harveymaker made  
this twenty first day of September one Thousand eight  
Hundred and thirty seven -

I do give and bequeath a set of China or Tea Service  
which was bought by me before I was married and also  
six silver Tea spoons to my Daughter Ann, I do also  
give my silver Watch to my son John Hart otherwise  
John Cutts the said Watch to become his property at  
the time of my decease, And I do give and bequeath all  
my live and dead Farming Stock Implements of Husbandry  
also all my Stock in Trade Book debts and Household  
Furniture and all my personal Estate and effects save and  
except as above mentioned - of whatever nature or kind  
or wheresoever situated to my son, William Hart on the  
undermentioned conditions namely that he the said William  
Hart shall pay all just debts which shall be owing by me  
at the time of my decease and also that he the said William  
Hart shall pay to my present Housekeeper Ann Cutts  
the sum of three shillings per week for the space of three  
Years from the time of my decease the said three shillings  
per week to be paid by him the said William Hart  
unto her the said Ann Cutts at four equal payments

This is the last Will and Testament of me John Hart of Wellow in the County of Nottingham Harness maker made this twenty first day of September one thousand eight hundred and thirty seven.

I do give and bequeath a set of China of Tea service which was bought by me before I was married and also six silver TeaSpoons to my Daughter Ann, I do also give my silver watch to my son John Hart otherwise John Cutts the said watch to become his property at the time of my decease, And I do give and bequeath all my live and dead Farming Stock Implements of Husbandry also all my Stock in Trade Book debts and Household Furniture and all my personal Estate and effects save and except as above mentioned of whatsoever nature of kind or wheresoever situate to my Son William Hart on the undermentioned condition namely that he the said William Hart shall pay all just debts which shall be owing by me at the time of my decease and also that he the said William Hart shall pay to my present House Keeper Ann Cutts the sum of three shillings per week for the space of three years from the time of my decease the said three shillings per week to be paid by him the said William Hart unto her the said Ann Cutts at four equal payments in each year the first payment to be made at the end of thirteen weeks after my decease and the said William Hart shall sign and give to the said Ann Cutts a proper Note or Security for the due payment of the said three shillings per week as before stated before he shall prove this my said last Will and Testament Nevertheless and provided that so long after my decease as my said son shall maintain and provide for the said Ann Cutts and her two youngest Children in his House then for each week for such provision made by him the said William Hart to her the said Ann Cutts and her two youngest Children the said sum of three shillings shall not be paid but such maintenance shall be considered in lieu of the said three shillings per week so long as she shall continue with him. And I do appoint my said Son William Hart my sole Executor of this my last Will and Testament In Witness Whereof I the said Testator have set my hand and seal the day and year above written

Signed Sealed Published and  
declared as the Last Will and  
Testament of the said Testator  
at his request in the presence  
and in the presence of each other  
who have subscribed our Names  
as Witnesses thereto.

John Hart

Robert Parkinson  
John Woombell

in each year the first payment to be made at the end  
of thirteen weeks after my decease and the said William Hart  
shall sign and give to the said Ann Luttie a proper  
Note or Security for the due payment of the said three shillings  
per week as before stated before he shall prove this my  
said last Will and Testament Nevertheless and provided  
that so long after my decease as my said Son shall maintain  
and provide for the said Ann Luttie and her two youngest  
children in his House then for each week for such provision  
made by him the said William Hart to her the said Ann  
Luttie and her two youngest children the said sum of three  
shillings shall not be paid, but such maintenance shall be  
considered in lieu of the said three shillings for so long  
so long as she shall continue with him And I do appoint  
my said Son William Hart my sole Executor of this my  
said last Will and Testament In Witness whereof  
the said Testator have set my hand and Seal the day  
and year above written

Signed, Sealed, Published and  
declared as the last Will and  
Testament of the said Testator  
at his request in his presence  
and in the presence of each  
of us who have subscribed our Names  
Witnesses thereto

Wm Hart

Robert Parkinson  
John Woodruff

I hereby certify that  
from last 1834 with  
James Hart (the  
son and heir of the  
Deceased of York New  
Hampshire and father  
of the said children  
now deceased in

Wm

with me at 200 Essex  
Died 15 October 1854

20

| The Disbursement of Mr. Gougill and Mr. Walker<br>Over Years of the poor of Melton from Apr. the 1 <sup>st</sup><br>1819 to Apr. the 1 <sup>st</sup> 1820 |   | A D C |    |       |
|---|---|-------|----|-------|
|   |   | 0     | 4  | 6     |
| Apr. 3  | paid poor Maronist                            | 0     | 7  | 6     |
| 6   | paid giving up the counts                     | 0     | 8  | 0     |
| 11  | paid John Wombell paying the counts           | 0     | 6  | 0     |
| 17  | Joney to Beasworn Jessor                      | 0     | 3  | 0     |
|   | paid John Warren mending fences Starks        | 1     | 9  | 6     |
| 29  | Joney to Shesons and paid                     | 4     | 5  | 5     |
| may 3   | Joney to Workhouse and paid                   | 0     | 0  | 0     |
|   | 2 paid Stockings for harnell                  | 1     | 11 | 6     |
|   | John Wombell Bill                             | 5     | 4  | 4     |
| 15  | Joney to pay Rents                            | 0     | 12 | 0     |
| 22  | Joney with Dublicats                          | 0     | 2  | 0     |
| 23  | Reliv man and his family                      | 0     | 0  | 0     |
| Jun 5   | Joney about Distresses                        | 0     | 1  | 6     |
|   | Sam Barden paid Stockings                     | 0     | 0  | 6     |
| 7   | Reliv man & 2 children                        | 2     | 4  | 6     |
| 14  | paid Inquest at Olveston                      | 0     | 6  | 0     |
| 21  | Joney to some Mrs. Baid                       | 1     | 1  | 0     |
|   | Reliv George Colson                           | 0     | 6  | 0     |
| 22  | Joney to tax for about Richard Powell         | 0     | 6  | 0     |
| 28  | Joney to Relivworth tout Colson               | 0     | 6  | 0     |
|   | Agreed to pay him 3 shillings Mark Relivman   | 6     | 0  | 0     |
|   | yard Rusbeck Duck to mend harnell smock frock | 1     | 5  | 6     |
| 30  | Red gown & 2 caps for a Shift                 | 0     | 10 | 0     |
|   | paid Stockings Blaney                         | 0     | 2  | 0     |
| July 11   | smock frock for Sam beard                     | 1     | 13 | 6     |
|   | Reliv woman and 3 children                    | 2     | 15 | 3     |
| 15  | Joney to Shesons and paid                     | 3     | 7  | 4 1/2 |
| 24  | Joney to pay county Rents                     | 0     | 6  | 0     |
| 29  | Joney to Workhouse paid                       | 0     | 6  | 0     |
| 16  | Joney to Workhouse to Repair 2c               | 1     | 11 | 6     |
| 24  | Joney to Workhouse                            | 31    | 12 | 9 1/2 |
|   | cloth for coat harnell and Mescoat            |       |    |       |
|   | and Mescoat for Sam beard                     |       |    |       |



Easter 1841. Cont'd

|   | £  | s  | d               |
|---|----|----|-----------------|
| 1840 Brought forward  | £  | 11 | 5 $\frac{3}{4}$ |
| Oct. 13 Visitation Fees   |    | 18 |                 |
| " Journey   |    | 12 |                 |
| 26 Pools rate   |    |    | 2 $\frac{1}{2}$ |
| Nov. 16 Two tons Coal for<br>the Poor                                       |    | 19 |                 |
| " Cartage of D.   |    | 1  |                 |
| Dec. 3 Candles for ringers  |    | 1  |                 |
| " Shew for lighting Stoves  |    |    | 3               |
| 4 Wine for Sacrament  |    | 4  |                 |
| 1841 Jan. 1 D. D.   |    | 4  |                 |
| 31 Pools rate   |    |    | 2 $\frac{1}{2}$ |
| Mar. 14 Ale for ringers <sup>John W. Wright</sup>                           |    | 4  |                 |
| Apr. 9 Wine for Sacrament   |    | 4  |                 |
| Postages  |    | 1  | 3               |
| May 11 Henry Johnson for Coal   |    | 3  | 4               |
| 12 S. Morby, Clerk's<br>Salary & for washing Surplis<br>cleaning Church &c. | £  | 2  | 10              |
| 19 J. Harrison for repairs<br>in Church &c.                                 |    | 5  | 2               |
| Carried forward   | 18 | 11 | 6 $\frac{3}{4}$ |

County of Nottingham. The Examination of William Blyton taken upon Oath before  
us his Majesty's Justices of the peace in and for the said  
County this 11th day of June 1785. Touching his settlement.

Who on his oath saith that he was born at Wellow in the County of Nottingham of  
parents residing there whose Settlement was at Kneesall in the said County - That he  
hath done several years Service in different places the last whole year of which  
was at Wellow aforesaid and which was about fifteen years ago - when he was then about  
a Week past Martinmas - hired to serve until the Martinmas following to William Taylor  
of Laxton in the said County Farmer and served him about two months at Laxton when  
this Examinant being taken ill went home and staid until his health was re established  
and then returned to his Master and served him a month or two more of the said year  
when he being again taken ill went home and staid until he got better which as about  
a week and then he again returned to his Master at Laxton aforesaid and continued  
with him until the end of the year and his Master stopped out of his Wages about  
Twelve Shillings for the time the Examinant was away - That this Examinant then went  
to Wellow aforesaid and entered upon a House and Lands there of the yearly Rent of  
Eleven pounds and five shillings of William Woodhouse of Mansfield in the said County  
and he occupied the whole of such premises upwards of one year but was never assessed  
to the Poor Rate for the said premises since which time he hath never Rented Ten pounds  
a year paid any parish Levies Served any parish office or done any act whatever  
whereby to gain a Settlement and now resides in the parish of Mansfield aforesaid  
with Martha his Wife, Thomas aged about eight years William aged about five years and  
Frances aged about upward of two years the children of this Examinant by his said  
wife

Sworn before us  
Thos. Charlton  
W. Milnes

his  
William Blyton  
mark

County of Nottingham The Examination of William Blyton taken upon  
Oath before us his Majesty's Justice of the peace in and for  
the said County this 11<sup>th</sup> day of June 1785. Touching his  
Settlement

Who on his Oath saith That he was born at Wollow in the County  
of Nottingham of Parents residing there whose Settlement was at  
Kneorsall in the said County - That he hath done several years Service  
in different places the last whole year of which was at Wollow  
aforesaid and which was about fifteen years ago - when he was then  
(about a Week past. Martin was) hired to serve until the Martinmas  
following to William Taylor of Laxton in the said County Farmer and  
served him about two Months at Laxton when this Examinant was  
being taken ill went home and staid until his Health was  
re-established and then returned to his Master and served him a  
Month or two more of the said year when he being again taken  
ill went home and staid until he got better which was about a  
Week and then he again returned to his Master at Laxton aforesaid  
and continued with him until the end of the year and his  
Master stopped out of his Wages about Twelve Shillings for the time  
this Examinant was away - That this Examinant then went to  
Wollow aforesaid and entered upon a House and Lands there of the  
 yearly Rent of Eleven pounds and five shillings of William  
Woodhouse of Mansfield in the said County and he occupied <sup>the whole of</sup> such  
premises upwards of one year but was never allowed to the poor  
rates for the said premises since which time he hath never Rented so  
pounds a year paid any parish Levies served any parish office or done  
any act whatever whereby to gain a Settlement and now resides in  
the parish of Mansfield aforesaid with Maria his Wife, Thomas  
aged about Eight years William aged about five years and Francis  
aged about upward of two years the Children of this Examinant by his  
said Wife. -

Sworn before us.

Thos. Charleson  
W. Milnes

William Blyton  
his Mark

Commercial directories were very popular during the nineteenth century, and into the early part of the twentieth century, until the telephone directory took over a large part of their function. The usual format was a description of the parish and its principal buildings, followed by a list of the chief inhabitants and their occupations. The directories are a detailed source of information of their time, but entries should not be regarded as absolute fact, because mistakes were often made during compilation.

This extract from White's Directory of 1864 gives details of Wellow. A large part of the description is given over to the District Hospital and Dispensary established in 1842 in part of Wellow Hall, with six beds to cater for the sick and lame poor of the district. There was much optimism about this venture, but a later entry in the White's Directory of 1885 states that there was so little support for the institution that it had been discontinued 'for many years'.

Perhaps the most interesting section, especially for students of social history, is the list of chief parishioners. This gives an indication of the diversity of skills and occupations within the village. Interestingly, quite a number of people had more than one trade. Farming was obviously the main occupation, there were also three shoemakers and three chairmakers. This last was a thriving industry in 1864 (the 'Wellow Chair' was of the Windsor type), but had ceased sometime before 1885.

Quite a number of inhabitants worked for the local estates of Rufford and Thoresby, and the Rufford agent and his clerk resided in the village. Three public houses, the Durham Ox, Red Lion and Black Horse and a beerhouse, are mentioned, although it is known that at least two other public houses, The White Horse and The Live and Let Live, have been in existence as well. The family name of Joseph Frisby, the butcher, was commemorated in a row of terraced cottages, which once stood on the site of the Durham Ox car park. They were known as Frisby's Yard, and were demolished in 1960.

There was also a school for the children, large enough to warrant two schoolmistresses in 1864. As far back as 1793, it is known that educational provision was made for at least some village children, for at this date Sir Francis Molyneux, who lived at Wellow Hall, was giving £1-11-3d annually for the schooling of six boys at Wellow. It is said that at one time the Woolhouse Private School was established in the house known as Cuck Stool, but by 1855 a school sponsored by the National Schools Association was founded next to Rock House.

WELLOW is a parish and considerable village, on the Worksop and Newark road, 1 mile E.S.E. of Ollerton, contains 948a. 1a. 4r. of land, and in 1861, had 181 houses, and 408 inhabitants, rateable value £1,655 7s. H. Savile, Esq., is the chief owner, and lord of the manor, there are also several small freeholders. Of the land, about 200a. are in Wellow Park, a thickly wooded eminence which rises to a considerable altitude on the north side of the village to Cockin hill near Boughton. In the centre of the village, which is seated on a green, is a lofty May pole, tastefully painted, and ornamented with garlands. Within a mile west of the village is the park and lake of Rufford. Some of the villagers are employed in turning wood and making chairs. Many of them were also formerly engaged in cultivating hops, but this branch of agriculture has greatly declined. The church dedicated to St. Swithin, was partly rebuilt and thoroughly repaired about 50 years ago, principally of brick, roofed with blue slate. It was anciently appropriated to Rufford abbey, and is now in the patronage of Henry Savile, Esq., and appropriation of the Dean and Chapter of Lincoln, who have let the tithes on lease to the Duke of Newcastle. The living is a perpetual curacy, value £60, in the incumbency of the Rev. German Patrick Hoyle M.A. The Wesleyan and Primitive Methodists have each a chapel here, the former built in 1804, the latter in 1817. Wellow is not mentioned in Doomsday book, but is supposed to be included under the names of *Cratels* and *Grymston*, places which were partly in the soken of Mansfield, but now unknown, though the superstitious wives here often frighten their children with a traditional tale of "*Grymston Ghost*," said to haunt the site of a village of that name, which was swallowed up by an earthquake. *Jordan Foliot*, in the 88th of Henry III. had free warren here, and obtained leave to embattle his manor house of *Grymston*, which occupied the elevated site of a farm house now called *Jordan Castle*.

*Wellow Hall*, a large and commodious mansion, with extensive pleasure grounds, is situated at the entrance of the village from Ollerton. It was formerly the seat of Sir Fras. Molyneux, Bart., but is now the property and residence of William Squire Ward, Esq. The apartments on the west side of the hall, have been converted into a *District Hospital and Dispensary* for the relief of the sick and lame poor, from whatever county recommended; to be open for the reception, maintenance, and treatment, not only of such patients whose cases are judged fit to be received into the house, but also a Dispensary for out-patients, who shall have the advantage of medical and surgical assistance at the hospitals, and be supplied with the medicines and applications prescribed. A very general want of some such Institution, has been sensibly felt by many of the resident clergy, and others, who from professional or personal knowledge, of casualties and diseases, so constantly occurring amongst the poor classes, and considering that the distance from the *General Hospital* at Nottingham, these districts, the *Bassettlaw* and part of the *Thurgarton* Hundreds, are comparatively destitute of any of its advantages; therefore a number of individuals resolved to establish such an institution, on a small scale, at Wellow, which was accordingly done in March, 1842. The institution at present consists of six beds, which it is considered will afford accommodation to about 50 in-patients. From the prospect of the great usefulness of this institution, the committee earnestly recommend it to all the more affluent residents of the *Bassettlaw* hundred, and there can be little doubt, that as the institution is more fully known, it will meet with the support of much greater numbers.

**Post Office**, at Elizabeth Bacon's. Letters arrive by mail cart from Newark at 7.40 a.m., and are despatched at 6.30 p.m.

**Doveridge James F.**, M.D. and surgeon  
**Crofts James**, vict., and furniture dealer,  
 Red Lion  
**Day John**, vict., Durham Ox  
**Day John Alvey**, saddler and harness mkr.  
**Fawcett Cecilia**, infant school  
**Fotheringham Mr.** Richard  
**Frisby Joseph**, butcher  
**Harrison John**, wheelwright  
**Johnson Joseph**, beer house  
**Kirk Stephen**, draper  
**Kitchen William**, vict., Black Horse  
**Kichen William**, jun., woodman & cottager  
**Musling Edward**, bookseller and tea dealer  
**Norton Wm.** and **John**, joiners & builders  
**Noble William**, gardener  
**Pinder Mrs. Hannah**  
**Pinder George**, gardener  
**Parkinson Robert**, jun., land agent's clerk  
**Pottenger Joseph**, blacksmith  
**Hoyle Rev. German Patrick**, M.A., vicar and chaplain at Rufford.  
**Syconer Lucius Henry**, Esq., land agent to Henry Savile, Esq., Wellow house  
**Steadman Thomas**, thrashing machine proprietor, and Ollerton  
**Street Charles**, toll bar keeper  
**Teather Peter**, plumber, at Thoraby hall  
**Ward and Doveridge**, surgeons  
**Ward Wm. Squire**, surgeon, at Wellow Hall  
**Weston George**, cottager

#### CHAIRMAKERS.

**Goodwin James**  
**Goodwin John**  
**Hawes Jabez**  
**FARMERS.**  
**Allwood John**  
**Cocking Matthew**  
**Day John Alvey**  
**Draycott John**, (and pig jobber)  
**Gadsby John**  
**Hind Edward**  
**Housley Sarah**  
**Kitchen Wm.**, sen.

#### FARMERS.

**Newham Henry**  
**Newton William**  
**Parkinson Robert**  
**Steadman Thomas**  
**Walker John**  
**Walker John**, jun.,  
*Jordan Castle*  
**Wrightman John**  
**Wombell Elizabeth**  
 and **William**  
**GROCERS.**  
**Bacon Elizabeth**, and  
 schoolmistress  
**Crofts William**, (and  
 tailor and draper)  
**Goodwin John**  
**Lee Abraham**, (and  
 cabinet maker  
**Marsh William**  
**SHOEMAKERS.**  
**Moorby Joseph**  
**Moore George**, (and  
 parish clerk)  
**Outram Joseph**

#### OMNIBUS.

**John Day**, to *Tuxford*, on Mon., at 11 a.m., to *Newark* on Wed., at 8.45 a.m., to *Mansfield* on Thurs. at 9 a.m., and *Retford* Sat. at 9.30 a.m. The above all start from the *Hoppole Inn*, Ollerton

#### CARRIER.

**William Jackson**, to *Worksop* Wed. and *Mansfield* Thurs.

I, THE MOST NOBLE HENRY PELHAM CLINTON DUKE OF NEWCASTLE under the authority of an act passed in the Fifth year of the reign of her Majesty Queen Victoria intituled "An Act to afford further facilities for the conveyance and endowment of Sites for Schools" and of the Act of the eighth year of the reign of Her present Majesty explaining the same DO hereby freely and voluntarily and without valuable consideration grant and convey unto the Minister and Churchwardens of the Parish of Wellow in the County of Nottingham and their successors

ALL THAT piece or parcel of land situate and being in Wellow aforesaid being fifty seven feet in length and thirty two feet in breadth and containing two hundred and three square yards or thereabouts and which is bounded on the north by property belonging to the Duke of Newcastle and occupied by Messieurs Hind and Cartledge on the south by the High Road between Ollerton and Newark on the east by property belonging to the Duke of Newcastle and occupied by Abraham Newton and on the west by a strip and range of sheds the property of Mr. Miller of Ollerton in the said County of Nottingham which said premises are delineated in the map drawn in the margin hereof

TOGETHER with all easements appurtenances and hereditaments corporeal and incorporeal belonging thereto or connected therewith AND all my estate right title and interest therein or to the said premises

TO HOLD the same unto and to the use of the said Minister and Churchwardens of the Parish of Wellow aforesaid and their successors for the purposes of the said Act and UPON TRUST to permit the said premises and all buildings thereon erected or to be erected to be for ever hereafter appropriated and used as and for a school for the education of children and adults or children only of the labouring manufacturing and other poorer class in the Parish of Wellow aforesaid and as a residence for the teacher or teachers of the said school and for no other purpose which said school shall always be in union with and conducted upon the principles and in furtherance of the ends and designs of the Incorporated National Society for promoting the education of the poor in the principles of the Established Church and shall at all reasonable times be opened to the inspection of the Inspector or Inspectors for the time being appointed or to be appointed in conformity with the Order in Council bearing date the tenth day of August One thousand eight hundred and forty

AND I do for myself my heirs executors and administrators COVENANT with the said Minister and Churchwardens and their successors that notwithstanding any act or default of me or of any of my ancestors I have good right to assure the said premises to the said Minister and Churchwardens and their successors in manner aforesaid

AND THAT the said premises shall at all times hereafter be held and enjoyed upon the trusts and in the manner aforesaid without interruption from and free from all incumbrances by me or my heirs or any person lawfully claiming under or in trust for me or them or any of my ancestors and that I and my heirs and all persons claiming under or in ~~trust~~ trust for me or them or any of my ancestors shall upon every request and at the expense of the said Minister and Churchwardens and their successors make and perfect all such further assurances of the said premises as may be required by them for conveying the same to the use of the said Minister and Churchwardens and their successors in manner aforesaid.

In WITNESS whereof I have hereunto set my hand and seal this twenty sixth day of December in the year of our Lord one thousand eight hundred and fifty five.

\* Newcastle.

\* Frederick Saville Lumley  
Minister of the said parish of Wellow.

Taken and acknowledged by Frederick Saville Lumley, the Minister of Wellow, party hereto, at Mansfield in the County of Nottingham this ninth day of January 1856.

Before me G. W. Walkden a Commissioner to administer Oaths in Chancery in England.

PR 19,050

PR 19,050



## WELLOW CENSUS 1851

The 1851 census for Wellow shows us some interesting items, a few of which I will mention. Ofcourse the occupations of a village are the usual ones of Farmers and Agricultural Labourers, there being 15 Farmers, 4 of whom farmed over 100 acres, 3 farmed over 50 acres leaving 8 with under 50 acres. There were 81 Labourers who were the majority of the male population at that time.

By far the largest number of the population were the school children of whom there were 109 pupils with 2 school mistresses and 1 pupil teacher.

The other usual village occupations in the census were 5 Butchers, 4 Grocers, 3 Tailors, 3 Victualers (The public houses being the Red Lion, the Black Horse and the Durham Ox) and 1 Beerhouse Keeper, also Saddlers, wheelwrights and many other varied occupations which helped to make a village nearly self-sufficient.

Particully interesting are the unusal ones like Chairmakers of whom there were 16 with one John Goodwin employing 12 men. Accompanying the Chairmaking are the other trades linked to it such as Chair-Bottomer, Chair Polisher and Chair Grainer. The 1851 Census was the first one to ask for the place of birth and an interesting fact to emerge was that 9 of the 16 Chairmakers came from High Wycombe in Buckingham and that surrounding area.

The presence of a Hospital is also unusal, at the census ther were 4 Patients and a Nurse none of whom had been born at Wellow.

The 2 Surgeons who with their familes lived in the village were Mr. Ward and Mr. Williams. Mr. williams also came from High Wycombe which leads us to suppose if there was any connection with the Chairmakers being in the village, further research may show us.

OCCUPATIONS WELLOW CENSUS 1851

1851

17

|                               |                        |  |    |
|-------------------------------|------------------------|--|----|
| Farm and Agricultural Labs.   | 81                     |  |    |
| Scholars.                     | 109                    |  |    |
| School Mistress.              | 2                      |  |    |
| Pupil Teacher.                | 1                      |  |    |
| Farmers.                      | 15 (9) under 50 acres. |  |    |
| Chairmakers.                  | 14                     |  |    |
| Chair Bottomer.               | 3                      |  |    |
| Chair Polisher.               | 1                      |  |    |
| Chair Grainer.                | 1                      |  |    |
| Chair Lab.                    | 1                      |  |    |
| Cabinet Maker.                | 3                      |  |    |
| Wood Turner.                  | 2                      |  |    |
| Joiner.                       | 2                      |  |    |
| Joiners Lab.                  | 1                      |  |    |
| Carpenter.                    | 1                      |  |    |
| Furniture Broker              | 1                      |  |    |
| Furniture Brokers Apprentice. | 2                      |  |    |
| Wheelwright.                  | 2                      |  |    |
| Wheelwrights App.             | 1                      |  |    |
| Sawer.                        | 2                      |  |    |
| Tailor.                       | 3                      |  |    |
| Draper.                       | 3                      |  |    |
| Dressmaker                    | 2                      |  |    |
| Laundress.                    | 4                      |  |    |
| House Serwant.                | 18                     |  |    |
| Gentlemens Servant.           | 1                      |  |    |
| Coachman                      | 2                      |  |    |
| Gardener.                     | 3                      |  |    |
| Valet.                        | 1                      |  |    |
| Grocer.                       | 4                      |  |    |
| Butcher.                      | 5                      |  |    |
| Cordwainer.                   | 5                      |  |    |
| Cordwainer App.               | 1                      |  |    |
| Beerhouse Keeper.             | 1                      |  |    |
| Victualler.                   | 3                      |  |    |
| Saddler.                      | 1                      |  |    |
| Saddlers App.                 | 1                      |  |    |
| Brickmaker.                   | 4                      |  |    |
| Woodman.                      | 1                      |  |    |
| Letter Carrier.               | 1                      |  |    |
| Carrier.                      | 2                      |  |    |
| Toll Gate Keeper.             | 1                      |  |    |
| Framesmith                    | 1                      |  |    |
|                               |                        | Paupers                                | 13 |
|                               |                        | Huntsman.                              | 1  |
|                               |                        | Collector of Rags & Bones              | 3  |
|                               |                        | Surgeon.                               | 2  |
|                               |                        | Nurse.                                 | 1  |
|                               |                        | Dispenser of Medicine                  | 1  |
|                               |                        | Governess.                             | 1  |
|                               |                        | Basket Maker                           | 1  |
|                               |                        | Drainer of Land                        | 1  |
|                               |                        | Malsters Lab.                          | 1  |
|                               |                        | Visitors.                              | 12 |
|                               |                        | (Including 2 Primitive Methodist Prea) |    |
|                               |                        | <u>Ollerton Census 1851</u>            |    |
|                               |                        | <u>Wellow Green &amp; Crow Lane.</u>   |    |
|                               |                        | Agric Lab                              | 8  |
|                               |                        | Scholars.                              | 13 |
|                               |                        | Brickmakers.                           | 2  |
|                               |                        | Brickmaker Retired                     | 1  |
|                               |                        | Road Lab.                              | 1  |
|                               |                        | Pauper.                                | 1  |
|                               |                        | Carpenter Journey.                     | 1  |
|                               |                        | Blacksmith                             | 1  |
|                               |                        | School Teacher Retired                 | 1  |
|                               |                        | Wood Hower.                            | 1  |

WELLOW CENSUS 1851

| Name                     | Age.       | Occupation.                                | Born.                |
|--------------------------|------------|--|----------------------|
| 10. Robert Parkinson     | 60 h       | Farmer 240 acres employing                 | York Swillington     |
| 10. Suzannah "           | 57 w       | 2. labourers                               | Marnham              |
| 10. Robert "             | 13 s       | Scholar                                    |                      |
| 10. Sarah                | 11 d       | "  |                      |
| 10. George Wilkinson     | 55 ser     | Farm lab                                   | Marnham              |
| 10. Elizabeth Highfield  | 15 ser     | House servant                              | Walesby              |
| 11. George Bacon         | 60 h       | Ag. Lab                                    |                      |
| 11. Mary "               | w          |  | Walesby              |
| 12. Joshua Field         | 30 h       | Chair Maker Master                         | Bucks Aston Sandford |
| 12. Margaret "           | 30 w       |  | Ireland Dublin       |
| 12. Esther "             | 10 d       | Scholar                                    |                      |
| 12. John "               | 5 s        | "  |                      |
| 12. Mary "               | 4 c        | "  |                      |
| 12. Emma "               | 2 d        |  |                      |
| 13. Charles Cox          | 25 h       | Wood Turner                                |                      |
| 13. Emma "               | 25 w       |  | Herts Barkhamstead   |
| 13. George "             | 8 s        |  |                      |
| 13. Thomas "             | 4 s        |  |                      |
| 13. William "            | 1 s        |  |                      |
| 14. Edward Goodwin       | 35 h       | Chair Maker Journyman                      | Bucks High Wycombe   |
| 15. Edward Whitworth     | 27 h       | Bricklayer                                 | Clipstone.           |
| 15. Anne "               | 21 w       |  | Boughton             |
| 15. George "             | 2 s        |  |                      |
| 15. William "            | - s        |  |                      |
| 15. Ellen Whiteley       | 17 visitor | Dressmaker                                 |                      |
| 16. William Goodwin      | 35 h       | Chair Maker Master                         | Bucks High Wycombe   |
| 16. Mary "               | 25 w       |  | Rufford              |
| 16. Mary "               | 3 d        |  |                      |
| 16. Sarah "              | 10mn d     |  |                      |
| 17. John Goodwin         | 45 h       | Chair Maker Employing 12 Bucks. H. Wycombe |                      |
| 17. Elizabeth "          | 45 w       | Men  | Walesby              |
| 17. Charles *            | 15 s       | Scholar                                    |                      |
| 17. Elizabeth "          | 12 d       | "  |                      |
| 17. John "               | 10 s       | "  |                      |
| 17. Richard "            | 7 s        | "  |                      |
| 17. Hannah "             | 6 d        | "  |                      |
| 18. Richard Fotheringham | 65 h       | Chairmakers Lab.                           |                      |
| 18. Hannah "             | 67 w       |  | Bucks H. Wycombe     |
| 18. Ann "                | 11 d       | Scholar                                    |                      |
| 18. John Crowther        | 32 Lodger  | Chairmaker Journyman                       | Rufford.             |

WELLOW CENSUS 1851.

| Name                 | Age        | Occupation       | Born             |
|----------------------|------------|------------------|------------------|
| 19. Jabez Hawes      | 47 h       | Chair Maker      | Bucks -- Green   |
| 19. Mary "           | 15 w       |                  | Edwinstowe       |
| 19. George "         | 14 s       | Chair Maker      |                  |
| 19. William "        | 12 s       | Scholar          |                  |
| 19. Samuel "         | 17 Nephew  | Chair Maker      | Bucks Downley    |
| 20. George Walker    | 70 h       | Farmer 6 acres   | Boughton         |
| 20. Lucey "          | 70 w       |                  |                  |
| 20. John Wood        | 25 Lodger  | Ag. Lab          | Weston           |
| 20. John Pacy        | 25 "       | " "              | Kneesa l         |
| 21. James Goodwin    | 37 n       | Chair Maker      | Bucks n. Wycombe |
| 21. Lucey "          | 27 w       |                  | Ollerton         |
| 21. Lucey "          | 15 d       |                  | "                |
| 21. Mary "           | 11 d       |                  | "                |
| 21. James "          | 9 s        | Scholar          | "                |
| 21. Elizabeth "      | 6 d        | "                | "                |
| 21. John "           | 1 s        |                  |                  |
| 22. William Hickling | 40 h       | Ag. Lab          | Ruddington       |
| 22. Martha "         | 40 w       |                  | Keyworth         |
| 22. Mary "           | 20 d       | House Servant    | "                |
| 22. Ruth "           | 10 d       | Scholar          | Ruddington       |
| 23. Stephen Yelk     | 33 h       | Draper Master    | Weston           |
| 23. Eliza "          | 30 w       |                  | Edwinstowe       |
| 23. John "           | s          | Scholar          |                  |
| 23. Ann "            | 4 d        |                  |                  |
| 23. Sarah Bingham    | 12 visitor |                  | Harby            |
| 24. Elizabeth Ward   | 46 Widow   | Laundress        |                  |
| 24. Henry T. Ward    | s          | Scholar          |                  |
| 25. Joseph Marsh     | 27 h       | Brickmaker       |                  |
| 25. Hannah "         | 35 w       |                  | Derbys. Barlow   |
| 25. Richard "        | 7 s        | Scholar          |                  |
| 25. Sarah "          | 5 d        | "                |                  |
| 25. John "           | 3 s        |                  |                  |
| 25. Charlotte "      | 1 d        |                  |                  |
| 26. Joseph Johnson   | 50 h       | Beerhouse Keeper | Marham           |
| 26. "                | 50 w       |                  | Ganston          |
| 26. Godfrey "        | 21 s       | Ag. Lab          |                  |
| 26. Ann "            | 20 d       | House Servant    |                  |
| 26. William "        | 12 s       | Ag. lab          |                  |
| 26. David "          | 10 s       | Scholar          |                  |
| 26. Thomas "         | 8 s        | "                |                  |

WELLION CENSUS 1851

4

| Name                  | Age    | Occupation                       | Born                |
|-----------------------|--------|----------------------------------|---------------------|
| 27. Jane Hind         | 50 h   | Pauper formally Cordwainers wife | Bilsthorpe          |
| 27. Henry "           | 12 s   |                                  |                     |
| 27. Jane "            | 4 d    |                                  |                     |
| 27. Eliza "           | 1 d    |                                  | Southwell           |
| 28. William Davies    | 35 h   | Framesmith                       | Derbys Chesterfield |
| 28. Elizabeth "       | 33 w   |                                  | Ompton              |
| 29. Joseph Whitworth  | 49 h   | Ag. Lab                          | Edwinstowe          |
| 29. Elizabeth "       | 40 w   |                                  | Yorks Bramworth     |
| 29. Elizabeth "       | 14 d   |                                  |                     |
| 29. Maria "           | 6 d    |                                  |                     |
| 29. Eliza "           | 4 d    |                                  |                     |
| 29. Gervase "         | 1 s    |                                  |                     |
| 30. Francis Lee       | 30 h   | Ag. Lab                          | Farnsfield          |
| 30. Ann "             | 26 w   |                                  |                     |
| 30. William "         | 6 s    |                                  |                     |
| 30. Mary "            | 2 d    |                                  |                     |
| 30. Emily "           | 4 d    |                                  |                     |
| 30. John "            | 6mn s  |                                  |                     |
| 31. Catherine Hayes   | 40 h   | Laundress                        | Sutton-on-trent     |
| 31. Edwin "           | 11 s   |                                  | Southwell           |
| 32. John Weightman    | 35 h   | Farmer 144 acres employing       | Lincs North Scarle  |
| 32. Jane "            | 35 w   | 2 labs                           | Derbys Killarmarsh  |
| 32. John Herbert "    | 2 s    |                                  |                     |
| 32. Arthur Edward "   | 5mn s  |                                  |                     |
| 32. Rebecca Hayes     | 20 ser | House Servant                    | Laxton              |
| 32. William Bailey    | 21 ser | Ag. Lab                          | Elk&esley           |
| 32. Thomas Tattersall | 17 ser | "                                | "                   |
| 33. Thomas Marshall   | 49 h   | "                                | Marnham             |
| 33. Elizabeth "       | 49 w   |                                  | "                   |
| 33. William "         | 18 s   | Ag. Lab                          | Skegby              |
| 33. Ann "             | 16 d   |                                  | "                   |
| 33. Thomas "          | 14 s   |                                  | "                   |
| 33. Susannah "        | 12 d   | Scho&ar                          | "                   |
| 33. Betsy "           | 11 d   | "                                | "                   |
| 33. John "            | 9 s    | "                                | "                   |
| 33. Christopher "     | 7 s    | "                                | "                   |
| 34. Thomas Woombell   | 70 h   | Ag. Lab                          | W.                  |
| 34. Selina "          | 25 d   |                                  | Rufford             |
| 34. Robert "          | 10 gs  | Scholar                          |                     |
| 35. George Turner     | 47 h   | Ag. Lab                          |                     |

| Name                 | Age        | Occupation                | Born              |
|----------------------|------------|---------------------------|-------------------|
| 36. Thomas Eyre      | 59 h       | Collector of Rags & Bones | City Herefrd      |
| 36. Margaret "       | 60 w       |                           | Mansfield         |
| 37. John Draycott    | 29 h       | Carrier                   |                   |
| 37. Mary "           | 28 w       |                           | Boughton          |
| 38. William Crowder  | 56 h       | Ag. Lab                   | Carlton           |
| 38. Ann "            | 45 w       |                           | Ollerton          |
| 38. Elizabeth "      | 12 d       |                           |                   |
| 38. Henry "          | 8 s        |                           |                   |
| 38. Edward "         | 6 s        |                           |                   |
| 38. Ann "            | 3 d        |                           |                   |
| 39. William Cox      | 25 h       | Chair Maker Journyman     | Wellow            |
| 39. Sarah "          | 24 w       |                           |                   |
| 39. Elizabeth "      | 2 d        |                           |                   |
| 40. Jane Marshall    | 67 h       | Farmer 15 acres Employing | Great Cropwell    |
| 41. Henry Averham    | 52 h       | A. Lab 1 Lab              | Sutton Bonnington |
| 41. Lucy "           | 48 w       |                           | Kingstone         |
| 41. Frederick "      | 21 s       |                           | "                 |
| 42. Mary Trueman     | 45 widow   | Victualer                 | Lincs Grantham    |
| 42. Eliza "          | 18 d       |                           | Kneesall          |
| 42. Ann "            | - d        |                           | "                 |
| 43. Samuel Pruden    | 42 h Wid   | Chair Maker Journyman     | ? Perlethorpe     |
| 43. William "        | 10 s       |                           | Wellow            |
| 43. John "           | 8 s        |                           |                   |
| 43. Elizabeth Stocks | 50 Visitor |                           | Sutton-on-trent   |
| 44. Thomas Bowman    | 58 h       | Sawyer                    |                   |
| 44. Frances "        | 57 w       |                           | Sutton-on-trent   |
| 44. Gervase Robinson | 73 Visitor | Grocer Cumberland         | Wigton            |
| 44. Frances Holland  | 43 "       | Cardmaker Journyamn Lancs | Bury              |
| 44. William Thompson | 40 "       | A. Lab                    | York              |
| 45. James Wright     | 36 h       | Ag. Lab                   | Lincoln           |
| 45. Matilda "        | 37 w       |                           | "                 |
| 46. Gervase Kipline  | 29 h       | Ag. Lab                   | Laxton            |
| 46. Jane "           | 25 w       |                           |                   |
| 46. Thomas "         | 6 s        | Scholar                   |                   |
| 46. Ann "            | 3 d        |                           | Egmanton          |
| 46. John "           | 2 s        |                           |                   |
| 47. John Walker      | 73 h       | Farmer 66 acres.          |                   |
| 47. Sarah "          | 63 w       |                           |                   |
| 47. Thomas Thorn     | 18 ser     | Farm Lab                  | Ollerton          |
| 47. Ann Duckenfield  | 16 ser     | House Servant             | "                 |



6

WELLOW CENSUS 1851

| Name |                      | age |         | Occupation                 | Born         |
|------|----------------------|-----|---------|----------------------------|--------------|
| 48.  | Richard Moore        | 39  | h       | Farmer 32 acres            | Wellow.      |
| 48.  | Thomas Smith         | 17  |         | Farm Lab                   |              |
| 48.  | Ann Goodwin          | 16  |         | House Ser                  |              |
| 49.  | John Walker ( Jordan | 35  | h       | Farmer 115 acres employing |              |
| 49.  | Dorathy " Castle )   |     |         | 1 lab                      | Clipstone    |
| 49.  | George Cougill       | 62  | ser     | Farm Lab                   |              |
| 49.  | William Cragg        | 31  | ser     | "                          |              |
| 49.  | William Stocks       | 17  | ser     | "                          | Retford      |
| 49.  | Hannah Lowe          | 18  | ser     | House Ser                  | Eakring      |
| 50.  | Joseph Frisby        | 33  | h       | Butcher Master             |              |
| 50.  | Hannah "             | 30  | w       |                            | Ossington    |
| 51.  | Sarah Frisby         | 06  | h       | Wife of ag. Lab            | Leics Gadsby |
| 51.  | John "               | 31  | s       | Butcher                    |              |
| 51.  | Robert Fillingham    | 8   | visitor | Scholar                    | Bawtry       |
| 52.  | William Cole         | 38  | h       | Ag. Lab                    | Rampton      |
| 52.  | Ann "                | 35  | e       |                            |              |
| 52.  | George "             | 13  | s       |                            |              |
| 52.  | June "               | 6   | d       | Scholar                    | Ollerton     |
| 52.  | Eliza "              | 3   | d       |                            |              |
| 52.  | Sarah "              | 2   | d       |                            |              |
| 53.  | John Charlesworth    | 46  | h       | Ag. Lab                    | Clipstone    |
| 53.  | Mary "               |     | w       |                            |              |
| 53.  | John "               | 14  | s       |                            | Eakring      |
| 53.  | ? "                  | 10  |         | Scholar                    | "            |
| 53.  | Elizabeth /          | 8   | d       | "                          |              |
| 53.  | Eliza "              | 3   | d       |                            |              |
| 53.  | Thomas "             | 1   | s       |                            |              |
| 54.  | John Alvey Day       | 26  | h       | Saddler                    | Eakring      |
| 54.  | Ellen "              | 40  | w       |                            |              |
| 54.  | ? Hart               | 9   |         | Scholar                    |              |
| 54.  | John "               | 7   |         | "                          |              |
| 54.  | Elizabeth Day        | 4   | d       |                            |              |
| 54.  | George "             | 2   | s       |                            |              |
| 54.  | ? Cutts.             | 17  | App     | Apprentice                 |              |
| 55.  | Sarah Rousley        | 50  | h       | Farmer 50 acres employing  |              |
| 55.  | Agnes "              | 20  | d       | 1 lab                      |              |
| 55.  | ? "                  | 19  | d       |                            |              |
| 55.  | Anne Reid            | 17  | ser     | House Ser                  |              |
| 55.  | ? Lowe               | 27  | ser     | Farm Lab                   | Eakring      |
| 56.  | William Walker       | 72  | h       | Wheelwright Master         |              |

7

WELLOW CENSUS 1851

| Name          |           | Age. |         | Occupation        | Born            |
|---------------|-----------|------|---------|-------------------|-----------------|
| 57. George    | Highfield | 49   | h       | Ag. lab           | Walesby         |
| 57. Mary      | "         | 46   | w       |                   | East Markham    |
| 57. Ann       | "         | 14   | d       |                   | Walesby         |
| 57. Jane      | "         | 11   | d       |                   | "               |
| 57. John      | "         | 8    | s       | Scholar           | Ollerton        |
| 57. Sarah     | "         | 6    | d       | "                 | Kirton          |
| 57. Thomas    | "         | 4    | s       |                   | "               |
| 57. Charles   | "         | 1    | s       |                   | Walesby         |
| 58. Samuel    | Gibson    | 31   | h       | Cordwainer Master | Cropwell Butler |
| 58. Harriet.  | "         | 24   | w       |                   | Worksop         |
| 58. Mary      | "         | 6    | d       |                   | Wellow          |
| 58. Lucy      | "         | 4    | d       |                   | "               |
| 58. Samuel    | "         | 2    | s       |                   |                 |
| 58. ?         | "         | 3wks | d       |                   |                 |
| 58. William   | Wombell   |      |         | Apprentice        | Ollerton        |
| 59. John      | B ? ?     |      | h       | Victualer         | Eaton           |
| 59. Mary      | "         |      | w       |                   | Tuxford         |
| 59. Eliza     | "         |      | d       | Scholar           | Retford         |
| 59. Jane      | "         |      | d       |                   | Askham          |
| 59. James     | "         |      | s       |                   | Newark          |
| 60. John      | Day       | 30   | h       | Cordwainer Master |                 |
| 60. Elizabeth | "         | 27   | w       |                   | Mansfield       |
| 60. William   | "         | 6    | s       | Scholar           | "               |
| 60. Mary      | "         | 5    | d       | "                 | "               |
| 60. John      | "         |      |         |                   |                 |
| 60. Elizabeth | "         |      |         |                   |                 |
| 60. Mary      | Beardall  | 40   | visitor |                   | Mansfield       |
| 60. William   | Sanson    | 19   | app     | Apprentice        |                 |
| 60. Charles   | Crowder   |      | ser     | General Ser       |                 |
| 61. George    | Crowder   |      | h       | Ag. lab           |                 |
| 61. Elizabeth | "         |      | w       |                   | Coddington      |
| 61. Harriet   | "         |      | d       |                   | Kersall         |
| 62. William   | Cocking   |      | h       | Farmer 62 acres   | Weston          |
| 62. Jane      | "         |      | w       |                   | Maplebeck       |
| 62. Mary      | "         | 13   | d       | Scholar           | Kersall         |
| 62. Elizabeth | "         |      |         |                   | Weston          |
| 62. John      | Elkes     |      | ser     | Farm lab          | Tuxford         |
| 62. William   | Shankland | 62   | ser     | "                 | Scotland        |

WELLOW CENSUS 1851

8

| Name                 | Age | Occupation         | Born               |
|----------------------|-----|--------------------|--------------------|
| 63. William Bell     | 49  | Ag. Lab            | Clarbrough         |
| 63. Jane "           | 41  |                    | Lincs B. N. W.     |
| 63. Thomas "         | 15  |                    | Newark             |
| 63. William "        | 11  |                    |                    |
| 63. Ann "            | 8   | Scholar            |                    |
| 63. Elizabeth "      | 5   | "                  |                    |
| 63. Charles "        | 3   |                    |                    |
| 63. George "         |     |                    |                    |
| 64. John Alvey       | 51  | Ag. Lab.           | Boughton           |
| 64. Isabell "        | 52  |                    | Southwell          |
| 64. Henry "          | 15  | Chair Grainer      |                    |
| 64. William "        | 9   | Chair Polisher     |                    |
| 65. John Caudwell    | 48  | Ag. Lab            |                    |
| 65. Sarah "          | 47  |                    |                    |
| 65. Fanny "          | 17  |                    | Egmont             |
| 65. Sarah "          | 14  | Scholar            | Gamston            |
| 65. Elizabeth "      | 11  | "                  | Newark             |
| 66. John Cragg       | 50  | Ag Lab             |                    |
| 67. John Talbot      | 55  | "                  | Grassthorpe        |
| 68. George Moore     | 35  | Cordwainer Master  | Elkesley           |
| 68. Sarah "          | 32  |                    | Tuxford            |
| 68. John Thomas "    | 9   | Scholar            |                    |
| 68. Ann "            | 8   | "                  |                    |
| 68. Sarah "          | 7   | "                  |                    |
| 68. Elizabeth "      | 5   | "                  |                    |
| 68. Mary "           | 2   |                    |                    |
| 68. George "         | 1   |                    |                    |
| 69. John Duckenfield | 45  | Ag. Lab            | Kneesall           |
| 69. Martha "         | 36  |                    |                    |
| 69. Joseph "         | 19  | Ag. Lab            |                    |
| 69. Emma "           |     |                    |                    |
| 69. John Cragg       | 15  | son-in-law Ag. Lab |                    |
| 70. John North       | 50  | Ag. Lab            | Caunton            |
| 70. Martha "         | 15  |                    | Kneesall           |
| 70. Samuel "         | 12  | Scholar            |                    |
| 71. John Walker      | 44  | Ag. Lab            | Egmont             |
| 71. Mary "           | 37  |                    | Lincs Chapel Hills |
| 71. Thomas "         | 7   | Scholar            |                    |
| 71. Margaret O'Neil  | 53  | Laundress          | Ireland            |

WELLOW CENSUS 1851

9

| Name                | Age            | Occupation                   | Born               |
|---------------------|----------------|------------------------------|--------------------|
| 72. Hannah Draycott | 74 h           | Pauper Formally Ag. Lab Wife | Sutton-in-ashfield |
| 72. John Baxter     | 58 Lodger      | Collector of Rags & Bones    | Essex Southend     |
| 72. Peter Cokewell  | 42 Lodger      | Ag. Lab                      | Yorks Hull         |
| 73. William Teather | 40 h           | Wheelwright Journeyman       |                    |
| 73. Frances "       | 39 w           |                              | Eakring            |
| 73. Ann "           | 18 d           |                              | "                  |
| 73. William "       | 17 s           | Wheelwright Apprentice       | "                  |
| 73. Mary "          | 11 d           | Scholar                      |                    |
| 73. Thomas "        | 7 s            | "                            |                    |
| 74. Elizabeth Hurst | 78 h           | Pauper Letter Carrier        | Kneesall           |
| 74. Sarah "         | 16 gd          |                              |                    |
| 75. John Hardy      | 50 h           | Joiners Lab                  | Southwell          |
| 75. Ann "           | 50 w           |                              | Aslockton          |
| 76. Alice Stokes    | 93 h           | Pauper formally Ag. Lab wife |                    |
| 77. William Kitchen | 62 h           | Ag. Lab                      |                    |
| 77. Thomas Mitchell | 58 h           | "                            | Edwinstowe         |
| 77. Phoebe "        | 56 w           |                              |                    |
| 77. Ann "           | 11 d           | Scholar                      | Edwinstowe         |
| 77. Lucy "          | 1 gd           |                              |                    |
| 78. Robert Jackson  | 70 h           | Carrier                      | Torworth           |
| 78. Sarah "         | 74 w           |                              | Ollerton           |
| 78. William "/      | 36 s h         | Ag. Lab                      |                    |
| 78. Catherine "     | 33 dau -in-law |                              | Eakring            |
| 78. William "       | 10 gs          | Scholar                      |                    |
| 78. George "        | 7 gs           | "                            | Rufford            |
| 78. Sarah Anne "    | 5 gd           | "                            | "                  |
| 78. Elizabeth "     | 3 gd           | "                            | "                  |
| 78. Mary Ann "      | 10mn gd        |                              |                    |
| 79. William Kitchen | 44 h           | Victualer                    | Epperstone         |
| 79. Ann "           | 44 w           |                              |                    |
| 79. William "       | 21 s           | Woodman                      |                    |
| 79. Henry "         | 15 s           |                              |                    |
| 79. George "        | 12 s           | Scholar                      |                    |
| 79. Charles "       | 10 s           | "                            |                    |
| 79. James "         | 7 s            | "                            |                    |
| 79. Mary Ann "      | 1 d            |                              |                    |
| 79. Richard "       | 1 s            |                              |                    |
| 79. Ellen Bingham   | 14 ser         | House ser                    | Hansford           |

WELLOW CENSUS 1851

10

| Name                   | Age | Sex    | Occupation                   | Born                 |
|------------------------|-----|--------|------------------------------|----------------------|
| 80. Thomas Bust        | 52  | h      | Ag. Lab                      | Eakring              |
| 80. Elizabeth "        | 46  | w      |                              | Lincs Long Leadenham |
| 80. William "          | 26  | s      | Chair Bottamer               | Elston               |
| 80. Elizabeth "        | 23  | d      | House Ser                    | Eakring              |
| 80. Charles "          | 19  | s      | Chair Bottomer               | "                    |
| 80. Henry "            | 13  | s      | Farm Ser                     | "                    |
| 80. Ann "              | 11  | d      | Scholar                      | "                    |
| 80 . Mary "            | 8   |        | "                            | "                    |
| 80. Marhta "           | 6   | d      | "                            | "                    |
| 80. George "           | 5mn | gs     |                              | Southwell            |
| 81. Charles Teather    | 76  | h      | Farmer 10 acres              |                      |
| 81. Abigal "           | 62  | w      |                              | Linc: Laughterton    |
| 81. Thomas "           | 27  | s      | Butcher Master               |                      |
| 81. Maria "            | 23  |        | Dau-in-law                   |                      |
| 81. Picha J "          | 13  | gs     | Farm Ser                     |                      |
| 81. Augusta Margaret " | 2   | gd     |                              |                      |
| 81. Richard Killing    | 26  | Lodger | Primitive Methodist Preacher | Norfolk Stoke        |
| 81. Richard Turner     | 39  | Lodger | Gardener                     | Kirkby Ferry         |
| 82. William Hill       | 54  | h      | Bricklayer                   | Lincs Louth          |
| 82. Harriet "          | 57  | w      |                              | Yorks Rotherham      |
| 83. William Cougill    | 44  | h      | Ag. Lab                      |                      |
| 83. Sarah "            | 28  | w      |                              | Maplebeck            |
| 83. Mary Ann "         | 6   | d      | Scholar                      |                      |
| 83. George "           | 4   | s      |                              |                      |
| 83. William "          | 2   | s      |                              |                      |
| 84. Mary Bacon         | 70  | H un   | School Mitress               | Lincs Boothby        |
| 84. Eliza "            | 44  | d un   | Grocer                       | Nottingham           |
| 85. George Sharpe      | 42  | h      | Ag. Lab                      | Derbyshire?          |
| 85. Elizabeth "        | 37  | w      |                              | laneham              |
| 85. Mary "             | 7   | d      | Scholar                      |                      |
| 85. Elizabeth "        | 4   | d      | S                            |                      |
| 85. George "           | 2   | s      |                              |                      |
| 86. George ? ? ?       | 48  | h      | Coachman                     | Cropwell Bishop      |
| 86. Sarah "            | 38  | w      |                              | Cotgrave             |
| 86. Joseph "           | 11  | s      | Scholar                      | Nottingham           |
| 86. Edwin "            | 6   | s      |                              |                      |
| 86. Herbert "          | 2   | s      |                              |                      |
| 87. William Pacy ?     | 30  | h      | Ag Lab                       | Kneesall             |
| 87. Sarah Ann "        | 24  | w      |                              | Nottingham           |

WELLOW CENSUS 1851

11

| Name                   | Age |               | Occupation                  | Born               |
|------------------------|-----|---------------|-----------------------------|--------------------|
| 88. John Wombell       | 66  | h             | Farmer 169 acres Emp. 6 Lab |                    |
| 88. Elizabeth "        | 50  | w             |                             | Eakring            |
| 88. Ann "              | 26  | d             |                             |                    |
| 88. William "          | 19  | s             |                             |                    |
| 88. Catherine "        | 15  | d             |                             |                    |
| 88. Mary "             | 13  | d             | Scholar                     |                    |
| 88. Thomas "           | 9   | s             | "                           |                    |
| 88. Sarah Harvey       | 4   | gd            |                             | Ompton             |
| 88. Harriet Allwood    | 15  | ser           | House Se r                  | Farndon            |
| 88. William Gilbert    | 18  | ser           | Farm Lab                    |                    |
| 88. Joseph Cartledge   | 14  | ser           | " "                         |                    |
| 89. Jacob Crofts       | 34  | h un          | Draper & Tailor Master      |                    |
| 89. William Crofts     | 39  | Brother       | " "                         | Southwell          |
| 89. Harriet "          | 25  | sister-in-law |                             | York Doncaster     |
| 89. Jacob "            | 1   | nephew        |                             |                    |
| 89. James Crofts       | 31  | brother un    | Furniture Broker Master     |                    |
| 89. Elizabeth White    | 22  | visitor       | Dress Maker                 | Tuxford            |
| 89. Charles Johnson    | 17  | app           | Apprentice                  |                    |
| 89. Thomas Staniland   | 17  | app           | "                           | Emanton            |
| 89. Ann Sprowall       | 15  | ser           | House Ser                   | "                  |
| 90. William Louis Ward | 42- | h             | Surgoen (Koyal College)     | Ollerton           |
| 90. Mary Ester Hale "  | 42  | w             |                             | East Bridgford     |
| 90. Mary Ester "       | 16  | d             |                             | Ollerton           |
| 90. Ellen Catherine "  | 14  | d             |                             | "                  |
| 90. Sophia Wright      | 30  | Miece         |                             | East Bridgford     |
| 90. Ellen Lawrence     | 36  | gov           | Governess                   | City Ipswich       |
| 90. Harriet Paulson    | 22  | ser           | House Ser                   | Clipstone          |
| 90. Mary Hind          | 34  | ser           | "                           | Eakring            |
| 90. Mary Footit        | 27  | ser           | "                           | Cromwell           |
| 90. William Wright     | 20  |               | Dispenser of Medicine       | Lincoln (Supposed) |
| 90. Joseph Millhouse   | 44  | ser           | Servant                     | Lincoln Woorpe     |
| 91. William Noble      | 42  | h             | Gardener                    | Oxton              |
| 91. Mary "             | 46  | w             |                             | "                  |
| 91. Elizabeth "        | 15  | d             |                             | "                  |
| 91. William "          | 14  | s             |                             | "                  |
| 91. Mary "             | 13  | d             | Scholar                     | "                  |
| 92. Thomas Hayes       | 25  | h             | Ag. Lab                     | Eakring            |
| 92. Sarah "            | 29  | w             |                             | Ollerton           |
| 92. William "          | 5   | s             |                             | "                  |



WELLING CENSUS 1851

12

| Name                     | Age  |         | Occupation                                | Born             |
|--------------------------|------|---------|---|------------------|
| 93. Thomas Duckmanton    | 56   | h       | Cordwainer Master                         | Clipstone        |
| 93. Ann "                | 55   | w       |   |                  |
| 94. William Marsh        | 60   | h       | Ag. Lab                                   | Averham          |
| 94. Sarah "              | 58   | w       |   | Cuckney          |
| 94. Elizabeth "          | 16   | d       |   |                  |
| 94. George "             | 10   | gs      |   | Southwell        |
| 94. William Bonsford     | 27   | visitor | Primitive Methodist Preacher              | Norwell          |
| 95. Charles Gilbert      | 48   | wid     | Ag Lab                                    | Kirton           |
| 95. Mary "               | 11   | d       | Scholar                                   |                  |
| 95. Ann "                | 8    | d       | "   |                  |
| 96. Thomas Rayworth      | 30   | h       | Grocer                                    | Southwell        |
| 96. Linda ? "            | 24   | w       |   | York Sheffield   |
| 96. Emily Atkinson       | lunn | niece   |   | London           |
| 97. Sarah Bowman         | 60   | wid     | Pauper formally Ag. Lab wife              |                  |
| 97. Mary Ann "           | 10   | gd      | Pauper                                    |                  |
| 97. Edmund "             | 13   | s       | Gentlemens Servant                        | Ollerton         |
| 98. John Fox             | 42   | h       | Ag. Lab                                   |                  |
| 98. Elizabeth "          | 35   | w       |   | Egmanton         |
| 98. Frederick "          | 13   | s       | Scholar                                   | Costock          |
| 98. Lucy "               | 6    | d       | "   |                  |
| 99. John Blyton          | 65   | h       | Ag. Lab                                   | Mansfield        |
| 99. Sarah "              | 54   | w       |   | Derby Hickham    |
| 99. William "            | 16   | s       | Wood Turner                               | Mansfield        |
| 99. Thomas "             | 14   | s       |   | "                |
| 99. James "              | 12   | s       |   | "                |
| 100. Mary Taylor         | 40   | wid     | Pauper formally Ag. Lab wife              | Warsop           |
| 100. Hannah "            | 16   | d       |   | Sutton-in-ash.   |
| 100. Frederick "         | 13   | s       |   | Yorks Wals       |
| 100. George "            | "    | s       | Scholar                                   | Warsop           |
| 101. Edward Hind         | 58   | h       | Farmer 25 $\frac{1}{2}$ acres empl. 1 lab |                  |
| 101. Sarah "             | 55   | w       |   | Ollerton         |
| 101. Ann "               | 25   | d       |   | "                |
| 101. Edward "            | 16   | s       | Pupil Teacher                             |                  |
| 101. Maria "             | 11   | d       | Scholar                                   |                  |
| 101. William Thomas      | 24   | ser     | Farm Lab                                  | South Leverton   |
| 102. Thomas M. Williams  | 26   | h       | Surgeon (Royal College)                   | Bucks H. Wycombe |
| 102. Emma M. "           | 23   | w       |   | Cambs Wisbeach   |
| 102. Harriet Agnes Major | 20   | Visitor |   | "                |
| 102. Ann Hallam          | 24   | ser     | House                                     | Lincs Welbourne  |

WELLON CENSUS 1851

13

| Name                 | Age          | Occupation            | Born           |
|----------------------|--------------|-----------------------|----------------|
| 103. Robert Pruder   | 31 h         | Chair Maker Journyman | Beds Estow     |
| 103. Ann "           | 24 w         |                       | Babworth       |
| 104. Frances Lucas   | 63 wid       | Pauper Ag. Lab wife   | Whitwell       |
| 104. Ann "           | 18 d         | Dressmaker            |                |
| 105. James Hall      | 59 h         | Ag. Lab               | Derbys Elveton |
| 105. Sarah "         | 58 w         |                       | Derbys Whalley |
| 105. Ann "           | 19           |                       |                |
| 106. Ann Fewkes      | 69 wid       | Pauper Ag. Lab wife   | Budby          |
| 106. James "         | 39 s         |                       | " Dear & Dumb  |
| 107. Mary Knowles    | 72 wid       | Pauper Ag. Lab wife   | Elkesly        |
| 107. Thomas "        | 32 s         | Ag. Lab               | Greasley       |
| 107. John "          | 30 s         | "                     |                |
| 108. William Lane ?  | 32 h         | Ag. Lab               | Eakring        |
| 108. Ann "           | 31           |                       | Yorks Anston   |
| 109. John Jackson    | 55 h         | Ag Lab                | Clipston       |
| 109. Mary "          | 53 w         |                       | Dunham         |
| 109. Fanny "         | 22 d         |                       |                |
| 109. Joseph "        | 19 s         | Ag. Lab               |                |
| 109. Henry Whitworth | 20 nephew    | Chairmaker            |                |
| 110. Richard Wood    | 40 h         | Too Gate Keeper       | Kirklington    |
| 110. Mary "          | 41 w         |                       | Epperstone     |
| 110. Hannah "        | 13 d         |                       | Edingley       |
| 110. Mary "          | 7 d          | Scholar               |                |
| 110. George "        | 4 s          | "                     |                |
| 110. John "          | 1 s          |                       |                |
| 111. George Pandall  | 32 h         | Ag. Lab               | Morton         |
| 111. Mary "          | 34 w         |                       |                |
| 111. James "         | 9 s          | Scholar               |                |
| 111. John "          | 2 s          |                       |                |
| 112. William Coe     | 27 h         | Ag. Lab               | Weston         |
| 112. Elizabeth "     | 34 w         |                       | Lincs Grainsby |
| 112. William Bailey  | 3 son-in-law |                       | Muskham        |
| 112. Mary Ann Coe    | 1 d          |                       |                |
| 112. Luke "          | 1mn s        |                       |                |
| 113. William Lucas   | 38 h         | Ag. Lab               | Worksop        |
| 113. Mary "          | 28 w         |                       | Rufford        |
| 114. William Newton  | 27 h         | Carpenter             |                |
| 114. Sarah "         | 24 w         |                       | Eakring        |
| 114. Richard "       | 2mn s        |                       |                |

WELLOW CENSUS 1851

14

| Name                  | Age |            | Occupation            | born                 |
|-----------------------|-----|------------|-----------------------|----------------------|
| 115. John Allwood     | 50  | h          | Butcher Master        |                      |
| 115. Mary "           | 38  | w          |                       | Kirton               |
| 115. John "           | 16  | s          | Butcher               |                      |
| 115. George "         | 14  | s          | Scholar               |                      |
| 115. Robert "         | 13  | s          | "                     |                      |
| 115. Ann "            | 10  | d          | "                     |                      |
| 115. Paul "           | 8   | s          | "                     |                      |
| 115. Mary "           | 5   | d          | "                     |                      |
| 115. William          | 3   | s          |                       |                      |
| 115. Lucy "           | 1   | d          |                       |                      |
| 116. George Cartledge | 36  | h          | Malster Lab           |                      |
| 116. Elizabeth "      | 38  | w          |                       | Lincs Stragglethorpe |
| 116. Thomas "         | 12  | s          | Scholar               |                      |
| 116. George           | 9   | s          | "                     |                      |
| 116. Catherine        | 4   | d          |                       |                      |
| 116. Elizabeth "      | 2   | d          |                       |                      |
| 117. John Hind        | 65  | h          | Farmer 17 acres       |                      |
| 117. Elizabeth "      | 61  | w          |                       |                      |
| 117. Sarah Hill       | 32  | dau-in-law |                       |                      |
| 117. William Hind     | 13  | s          |                       |                      |
| 118. Jonathan Smith   | 58  | h          | Chair Maker           | Berks Downley        |
| 118. Esther "         | 39  | w          |                       | Laxton               |
| 118. William "        | 13  | s          |                       |                      |
| 119. William Dawson   | 45  | h          | Ag. Lab               | Rufford              |
| 119. Elizabeth "      | 45  | w          |                       | Edwinstowe           |
| 119. Samuel "         | 16  | s          | Farm Lab              | Ollerton             |
| 119. John /           | 14  | s          | "                     |                      |
| 119. George "         | 7   | s          | Scholar               |                      |
| 120. Richard Hart     | 34  | h          | Ag. Lab               |                      |
| 120. Maria "          | 32  | w          |                       | Yorks Barnsley       |
| 120. Fanny "          | 10m | d          |                       |                      |
| 121. Sarah Bennet     | 48  | h          | Ag. Lab wife          |                      |
| 121. John "           | 8   | s          | Scholar               |                      |
| 122. John Davies      | 26  | h          | Huntsman              | Rufford              |
| 122. Susanah "        | 20  | w          |                       | Tuxford              |
| 123. Joshua Field     | 50  | h          | Cabinet & Chair Maker | Herts Berkhamstead   |
| 123. Hannah "         | 50  | w          |                       | Bucks Aston Sanford  |
| 123. Moses "          | 12  | gs         | Scholar               |                      |
| 123. Thomas "         | 5   | gs         | "                     |                      |

WELTON CENSUS 1851

15

| Name                  | Age       | Occupation                  | Born              |
|-----------------------|-----------|-----------------------------|-------------------|
| 124. Martha Maler     | 44 h      | Pauper Lab, wife            | Maplebeck         |
| 124. William "        | 5 s       |                             | Yorks Attercliff  |
| 124. Hellen "         | 5 d       |                             |                   |
| 124. George "         | 6mn s     |                             |                   |
| 125. John Cartledge   | 66 h      | Farmer 12 acres             |                   |
| 125. Mary "           | 69 w      |                             | Lincoln           |
| 125. John "           | 23 s      | Drainer of Land             |                   |
| 125. James "          | 20 s      | Farm Lab                    |                   |
| 125. John Spenstone   | 5 gs      |                             | Arnold            |
| 126. James Wombell    | 20 h      | Ag. Lab                     |                   |
| 126. Mary Blackwell   | 29 lodger | Laudress                    | Newrak            |
| 127. Thomas Dattersby | 39 h      | Gardener                    | Gateford          |
| 127. Sarah "          | 42 w      |                             | "                 |
| 127. Henry "          | 12 s      | Scholar                     |                   |
| 127. Mary "           | 10 d      | "                           |                   |
| 127. Elizabeth "      | 8 d       | "                           |                   |
| 127. John "           | 4 s       |                             |                   |
| 128. Jane Newson      | 31 n      | Coll. clor. of Rags & Bones | Cuckney           |
| 128. John Kirk        | 18 lodger | Basket Maker Journey        | London            |
| 128. Ann "            | 17 "      |                             | Cromwell          |
| 129. William Marshall | 36 h      | Ag Lab                      |                   |
| 129. Mary Ann "       | 30 w      |                             | Lincs Granston    |
| 129. Charles "        | 6 s       | Scholar                     | Walesby           |
| 129. George "         | 4 s       | "                           | "                 |
| 129. Mary "           | 2 d       |                             | "                 |
| 129. William "        | 6mn s     |                             | "                 |
| 130. John Gadsby      | 52 h      | Farmer 30 acres Emp. 1 boy  |                   |
| 130. Susan "          | 17 w      |                             | Laxton            |
| 130. John "           | 9 s       | Scholar                     |                   |
| 130. Lucy "           | 8 d       | "                           |                   |
| 130. George Pruden    | 15 nephew | Farm Lab                    |                   |
| 131. Abraham Newton   | 63 h      | Joiner Master               |                   |
| 131. Ann "            | 64 w      |                             | Normanton-on-trer |
| 131. John "           | 31 s      | Joiner Journeyman           |                   |
| 131. Sarah "          | 22 d      | House Ser                   |                   |
| 132. Charles Hamblin  | 26 h      | Willet                      | Berkshire         |
| 132. Jenney "         | 25 w      |                             | Bufford           |
| 132. Fanny "          | 3 d       |                             | Edwinstowe        |
| 132. Isabella "       | 1 d       |                             |                   |

WELLOW CENSUS 1851

16

| Name                  | Age | Occupation      | Born          |
|-----------------------|-----|-----------------|---------------|
| <u>Hospital</u>       |     |                 |               |
| 133. Hannah Preste    | 46  | Nurse           | Eakring       |
| 133. George Mayers    | 62  | Patient Ag. Lab | Devon Chorley |
| 133. Thomas Bagshaw   | 69  | Patient Farmer  | Laxton        |
| 133. John Wombell     | 50  | Patient Ag. Lab | Maplebeck     |
| 133. Elizabeth Pinder | 12  | Patient         | Tuxford       |
| 134. John Kind        | 29  | h Ag. Lab       |               |
| 134. Sarah "          | 26  | w               | Ollerton      |
| 134. William "        | 4   | s               | "             |
| 134. Mary "           | 1mn |                 | "             |

Totals. 312 Males 265 Females 597 Total People visiting 12. Absent 10.

Wellow Green and Crow Lane are included in Ollerton Census.

includes the Blacksmith.

INDEX

|              |               |             |             |              |                   |
|--------------|---------------|-------------|-------------|--------------|-------------------|
| ALLWOOD      | 3, 88, 115    | COKEWELL    | 72.         | FOTHERINGHAM | 18.               |
| ATKINSON     | 96            | COLE        | 52.         | FOX          | 98                |
| AVERHAM      | 41            | COUGILL     | 49, 83.     | FRISBY       | 50.51             |
| BACON        | 11. 84        | COX         | 5, 13, 39.  | GADSBY       | 130               |
| BAGSHAW      | 133.          | CRAGG       | 49, 66, 69. | GARBITASS    | 9                 |
| BAILEY       | 32, 112.      | CROFTS      | 89.         | GIBSON       | 58                |
| BATTERSEY    | 127.          | CROWDER     | 38. 60.61   | GILBERT      | 88,95             |
| BAXTER       | 72.           | CROWTHER    | 18.         | GOODWIN      | 14,16,17,21,48.   |
| BEARDALL     | 60.           | CUTTS       | 54          | GRAY         | 1                 |
| BELL         | 63.           | DAVIES      | 26, 122     | HALL         | 105               |
| BENNET       | 121.          | DANSON      | 119         | HALLAM       | 102               |
| BINGHAM      | 23, 79        | DAY         | 54, 60      | HAMBLEN      | 132               |
| BLACKWELL    | 126           | DRAYCOTT    | 37, 72.     | HARDY        |                   |
| BLYTON       | 99            | DUCKENFIELD | 47. 69      | HART         | 54,120            |
| BONSFORD     | 94            | DUCKINGTON  | 93.         | HARVEY       | 58                |
| BOWMAN       | 44, 97        | ELKES       | 62.         | HAWES        |                   |
| Bust         | 80,           | ELLIS       | 8           | HAYES        | 31,32,92          |
| CARLEDGE     | 88, 116, 125, | EYRE        | 36          | HEMSON       | 128               |
| CAUDWELL     | 65,           | FACIT       | 6           | HICKING      | 22                |
| CHARLESWORTH | 53.           | FENWICKS    | 106         | HIGHFIELD    | 10,57             |
| C DOYING     | 62.           | FIELD       | 12,123      | HILL         | 82,117            |
| COE          | 112.          | FILLINGHAM  | 51          | HIND         | 27,90,101,117,134 |
|              |               | FLINTHAM    | 4           | HOLLAND      | 44                |
|              |               | FOOTIT      | 90          | HURST        | 74                |

cont.INDEX

JACKSON 78  
 JOHNSON 26, 89, 109  
 KELK 23  
 KILLING 81  
 KIPLINE 46  
 KIRK 128  
 KITCHEN 77, 79  
 KNOWLES 107  
 LANE 108  
 LANDY 2  
 LEE 3, 30  
 LOWE 49, 55  
 LUCAS 104, 113  
 MAJOR 102  
 MARSH 25, 94  
 MARSHALL 33, 40, 129  
 MEYERS 133  
 MILLHOUSE 0  
 MITCHELL 77  
 MOORE 48, 88  
 NALLER 124  
 NEWTON 114, 131  
 NOBLE 91  
 NORTH 70  
 O' NEIL 11  
 PAGE 20, 87  
 PARKINSON 10  
 PAULSON 90  
 PINDER 133  
 PRESTE 133  
 PRUDEN 43, 130

PRUDER 103  
 RANDALL 111  
 RAYWORTH 96  
 REID 55  
 ROBINSON 44  
 ROUSLEY 55  
 SANSOM 60  
 SHANTLAND 62  
 SHARPE 85  
 SMITH 48, 118  
 SPENSTONE 125  
 SPROWALL 89  
 SQUIRES 7  
 STANILAND 89  
 STOCKS 43, 49  
 STOKES 76  
 TALBOT 67  
 TATTERSHALL 32  
 TAYLOR 100  
 TEATHER 73, 81  
 THOMAS 101  
 THOMPSON 44  
 THORN 47  
 TRUEMAN 42  
 TURNER 35, 81  
 WAIVER 20, 47, 49, 56, 71  
 WARD 24, 90  
 WEIGHTMAN 32  
 WHITE 89  
 WHITELY 15  
 WHITWORTH 15, 29, 109  
 WILLIAMS 102  
 WILKINSON 10  
 WOOD 20, 110.  
 WOOMBELL 34, 58, 88, 126, 133  
 WRIGHT 45, 90



## IN THE DUKERIES

Nottinghamshire, Derbyshire and Yorkshire Borders.  
Between Nottingham and Doncaster, Mansfield, Newark-upon-Trent, Retford and Worksop.

### Particulars and Conditions of Sale

OF THE

# RUFFORD ABBEY ESTATE

extending to over

**15,500 acres**

including the historic

## RUFFORD ABBEY

dating from the XIIth Century

**RUFFORD PARK, and many FARMS, SMALL HOLDINGS,  
RESIDENCES, BUSINESS PREMISES, COTTAGES and  
BUILDING SITES**

in and about the Villages of

**Ollerton, Eakring, Bilsthorpe, Boughton, Wellow,  
Ompton, Egmanton and Walesby.**

*To be offered for Sale by Auction in Lots by*

**Messrs. KNIGHT, FRANK & RUTLEY**

(A. J. Burrows, F.S.I., P.P.A.I.; W. Gibson, D.S.O., F.S.I.; G. M. Cannon; A. J. Baker, F.S.I., F.A.I.; M. Mackenzie (U.S.A.), and E. Fisher.)

*At Rufford Abbey as follows:*

**On Tuesday, the 22nd day of November, 1938, and three following days at 10.30 a.m.  
and 2.0 p.m. sharp, each day.**

*The actual division of the Sessions will be announced later.*

(Unless previously disposed of privately).

**Solicitors:** Messrs. WITHERS & CO., Howard House, 4, Arundel Street, London, W.C.2.  
(Tel.: Temple Bar 2365.)

**Messrs. J. A. SIMPSON & COULBY, 12, Victoria Street, Nottingham. (Tel.: Nottingham 2811.)**

**Auctioneers:** Messrs. KNIGHT, FRANK & RUTLEY, 20, Hanover Square, London, W.1.  
(Tel.: Mayfair 3771.)

*And at the Rufford Estate Office, Ollerton, Notts. (Tel.: Edwinstowe 27.)*

Refreshments will be available at Rufford Abbey on each day of the Sale.

## GENERAL REMARKS

**THE RUFFORD ABBEY ESTATE** extends to over 15,500 acres, forming part of the ancient Sherwood Forest, and lies on each side of the main road from Nottingham to Doncaster, about 15 miles north of the County Town. It is entirely Freehold with the exception of certain Commons which are subject to Common Rights and a small area of former Copyhold.

The Estate first came into existence in 1148, when it was granted by Gilbert of Gaunt to the Monks of Rievaulx, who established and maintained an Abbey at Rufford for 400 years. At the Dissolution the property passed into the hands of George, fourth Earl of Shrewsbury, whose descendants have owned and occupied it ever since. The property now comes on to the market for the first time in its existence and affords a unique opportunity seldom available of purchasing land and property in this noted and beautiful district.

**SUMMARY.**—The Estate comprises Rufford Abbey, mainly built in the 16th and 17th Centuries but incorporating some parts of the original structure; Rufford Park, of over 500 acres, including Rufford Lake; a large number of important and well-known Farms, small Holdings, and accommodation lands; magnificent woodlands (principally Oak) and a great number of small residential and cottage properties in several villages.

The Estate lies along both sides of the main Nottingham/Doncaster Road being also intersected by the main roads from Newark to Worksop and Newark to Mansfield and it is readily accessible from many important industrial and agricultural centres.

**DEVELOPMENT.**—No land has hitherto been sold except for Colliery purposes or for schools and other public works. A large area in and about the principal villages is suitable for building or accommodation purposes, and has main water and electric light available. Several frontages already have main drainage, which is to be further extended in the early future.

The Estate, as a whole, is particularly well equipped with roads, having very many miles of frontage to the main roads already mentioned and to other public highways. Practically every building has, or is accessible to, a piped water supply and Company's electricity.

**THE WOODLANDS** are heavily stocked with oak, beech and other hard woods, mainly in their prime. They also include considerable areas of plantations of larch and soft woods suitable for colliery purposes. There are, in addition, areas of heathland, including Boughton Brake and Walesby Forest, some parts of which are suitable for early development. The greater part of Rufford Forest, consisting mainly of heathland, is leased to the Forestry Commission for a term of 999 years and has been entirely planted up.

**OUTGOINGS.**—The whole of the liberty of Rufford, and several of the other parishes, are free of tithe and the approximate apportionment tithe redemption annuity is given in the particulars of each Lot where subject to such payment. The Land Tax has also been estimated on each Lot according to the present assessments. All local rates are paid by the tenants throughout, except on properties in hand and a few cottages mainly let to employees. The water rates on the cottages are paid by the Landlord.

**SPORTING.**—Over the whole Estate the Sporting is reserved by the Vendor free of rent until the 1st February, 1939. The pheasant shooting is good and the Estate possesses some of the finest partridge ground in the district. In addition to Rufford Lake, there is another large lake at Inkersall suitable for rearing wild duck. Possession of the Keepers' Cottages will also be reserved until 1st February, 1939, subject to the rents now paid.

**TENANCIES.**—The Agricultural Holdings are all let on Yearly, Lady Day tenancies and a large proportion of the principal tenants have been on the Estate for very many years. In many instances, farms have been in the same family for several generations, and, in other cases, families have from time to time moved from smaller to larger farms. The smaller properties, including the cottages, are let almost throughout on Half-Yearly or Quarterly tenancies.

Three Collieries have been developed on the Rufford Estate during the last 30 years, and are operated by The Bolsover Colliery Company Limited, The Stanton Ironworks Company Limited, and The Butterley Company Limited, three important and influential Companies. Extensive railway developments have been carried out and new Colliery villages have been built at Ollerton, Bilsthorpe and Rainworth. These Colliery Companies have recently purchased the freehold of the surface works in connection with their undertakings, and it is believed that industrial development in this area will increase from time to time with consequent appreciation in the value of adjoining or neighbouring property and enhancement in the future prosperity of the district.

For detailed schedules of Lots, see end of Particulars.

LOT 228

Area: 0 a. 1 r. 13 p.

(Plan 2A—Coloured Green)

### COTTAGE EAKRING ROAD, WELLOW

| Tenant  | Tenancy   | Rent   |
|---|-----------|--------|
| Reps. of W. STARKEY   | QUARTERLY | £6 0 0 |
| Tithe Annuit 3/6 Land Tax 4/-   |           |        |
| Tenant pays Local Rates. Landlord pays Water Rate, 13/4 p.a. This Cottage is close to the Village Green, built of brick and tile and contains:—Sitting Room, Living Room, Kitchen, Pantry, Three Bedrooms. Outside E.C., Wood and Coal Store, Three-bay Shed and Pigsty. Pleasant Garden. |           |        |
| MAIN WATER LAID ON. ELECTRICITY AVAILABLE.  |           |        |

LOT 229

Area: 0 a. 0 r. 9 p.

(Plan 2A—Coloured Blue)

### DETACHED COTTAGE EAKRING ROAD, WELLOW

| Tenant  | Tenancy   | Rent   |
|---|-----------|--------|
| A. E. HAMPSTOCK   | QUARTERLY | £6 0 0 |
| Tithe Annuit 2d. Land Tax 3/-   |           |        |
| Tenant pays Local Rates. Landlord pays Water Rate, 9/- p.a. Opposite Lot 228, built of lath, plaster and tile, and containing:—Living Room, Kitchen, Pantry and Two Bedrooms. Outside Wash House and E.C. |           |        |
| Water from tap on Lot 230.<br>ELECTRICITY AVAILABLE.  |           |        |

LOT 230

Area: 0 a. 2 r. 7 p.

(Plan 2A—Coloured Pink)

### DETACHED COTTAGE EAKRING ROAD, WELLOW

| Tenant  | Tenancy   | Rent   |
|---|-----------|--------|
| J. CHAMBERS   | QUARTERLY | £7 0 0 |
| Tithe Annuit 3/10. Land Tax 3/-   |           |        |
| Tenant pays Local Rates. Landlord pays Water Rate, 9/- p.a. Next to the previous Lot, built of brick and tile and containing:—Living Room, Kitchen, Wash House, Pantry and Three Bedrooms. Outside E.C., Coal House, Wood Store and Pigsty. Garden and Orchard. |           |        |
| Main Water from tap outside.  |           |        |
| N.B.—This Lot is sold subject to the right of the occupier of Lot 229 to take water from the tap on this Lot.   |           |        |

LOTS 231 and 232

(Plan 2A—Coloured Pink and Yellow)

These will be offered separately

### TWO GARDENS BACK LANE, WELLOW

| Lot                   | Tenant          | Tenancy          | Tithe | Area       | Rent          |
|-----------------------|-----------------|------------------|-------|------------|---------------|
| 231                   | T. W. DUNN      | QUARTERLY        | 2 2   | 1 r. 5 p.  | £1 0 0 (App.) |
| 232                   | A. E. HAMPSTOCK | YEARLY, LADY DAY | 1 1   | 0 r. 21 p. | 5 0           |
| Land Tax: Lot 231 6d. |                 |                  |       |            |               |

LOT 233

Area: 89 a. 1 r. 26 p.

(Plan 2 & 2A—Coloured Blue)

### CHURCH FARM WELLOW

| Tenant           | Description               | Tenancy          | Area   | Rent            |
|------------------|---------------------------|------------------|--------|-----------------|
| GEORGE JOHNSON   | House, Buildings and Land | YEARLY, LADY DAY | 33-250 | 48 0 0 (App.)   |
| J. T. HUNT       | Arable and Grassland      | do.              | 45-213 | 40 0 0 (App.)   |
| WILLIAM WOOMBELL | Grass Fields              | do.              | 5-915  | 6 10 0 (App.)   |
| *J. T. WHITE     | Grass Field               | do.              | 5-033  | 4 0 0 (App.)    |
|                  |                           |                  |        | 89-411 £98 10 0 |

\* Giving up 25th March, 1939.

Tithe Annuit £10 10s. 2d. Land Tax £1 10s. 11d.

THE HOUSE is double-fronted, built of brick and tile and overlooks the Village Green. It contains:—Hall, Sitting Room, Drawing Room, Kitchen, Scullery, Cellar, and Three Bedrooms. Outside Lavatory and Coal Shed. Garden with lawn, flower beds and small Orchard.

MAIN WATER AND ELECTRIC LIGHT.

THE BUILDINGS, situated behind the house, are chiefly of brick and tile and include:—Calf Box, Two-bay Cart Shed, Barn with Granary over, Loose Box, Crew Yard with Two-bay Shed and water laid on, Loose Box. Cow Sheds for three and five respectively, Pigsty, Stable for three; Two-bay Cart Shed.

THE LAND consists of two Grass Fields of 13 acres fronting the Wellow-Newark main road and 47 acres of Arable and 28 acres of Grass, situated in two blocks adjoining the Wellow-Eakring road and bounded by Gallow Hole Dyke.

N.B.—An adjoining owner pays a wayleave rental of 1s. per annum for a drainage easement concerning this Lot.

This Lot is sold subject to an easement in favour of the Derby & Notts Electric Power Co. Ltd. for poles and cables shortly to be erected thereon.

LOT 234

Area: 0 a. 3 r. 26 p.

(Plan 2A—Coloured Yellow)

### BUILDING SITE NEWARK ROAD, WELLOW

| Tenant                        | Tenancy          | Rent           |
|-------------------------------|------------------|----------------|
| URBANE GOODWIN                | YEARLY, LADY DAY | £1 10 0 (App.) |
| Tithe Annuit 7/8 Land Tax 9d. |                  |                |

Situated close to the Vicarage with a road frontage of about 115 feet.

MAIN WATER AND ELECTRICITY AVAILABLE.

N.B.—This Lot is sold subject to easements for Electricity poles and cables thereon.

LOT 235

Area: 2 a. 0 r. 21 p.

(Plan 2A—Coloured Pink)

### GRASS FIELD NEWARK ROAD, WELLOW

| Tenant                         | Tenancy          | Rent          |
|--------------------------------|------------------|---------------|
| J. T. HUNT                     | YEARLY, LADY DAY | £2 0 0 (App.) |
| Tithe Annuit 10/- Land Tax 6d. |                  |               |

Frontage of about 130 feet to the main road.

To all to whom These presents shall come Sir George Savile  
of Rufford in the County of Nottingham Baronet Lord of the  
Manners of Rufford Bilsthorp Eakring Wellow Boughton and  
Horton with Walsby in the said County sendeth greeting  
Knowe ye that I the said Sir George Savile HAVE deputed  
authorized and appointed and by these presents DO depute  
authorize and appoint William Bolton of Rufford aforesaid  
Serving man to be my Game Keeper within the said Manner  
of Rufford Bilsthorp Eakring Wellow Boughton and Horton  
with Walsby And I do hereby impose and authorize him the  
said William Bolton from Time to Time and at all Times  
during my Will and Pleasures only and no longer to hunt  
course sett shoot haue fish and fowl within the said Manner  
and within all and every the Lands Grounds Woods Boundaries  
precincts Limits and Circuits of the same respectively in as  
full and ample manner as I myself might or could do in any  
Respect whatsoever And also to do or cause to be done within  
the said Mannors and the respective Liberties thereof all and  
whatsoever belongeth to the Office of a Game Keeper In Witnes  
whereof I have hereunto sett my Hand and Seal the thirty first  
Day of January in the thirty first Year of the Reigne of our  
Sovereign Lord George the Second by the Grace of God of Great  
Britain France and Ireland King Defender of the Faith  
and so forth And in the Year of our Lord One thousand Seven  
hundred and fifty Eight

And delivered being first duly

uph/ In the presence of us . . .

Joseph Harrison  
 J. H. H.

George Savile

1. March 1758. Entered with

M<sup>o</sup> Hurst  
 Deputy Clerk of the Peace



76

THE RUFFORD HOUNDS

To be Sold by Auction

by

Messrs TATNERS. ALL

On THURSDAY, APRIL 4th, 1872,

Commencing at One o'clock,

AT THE GONALSTON KENNELS

(Which are close to the Lowdham and Thurgarton Stations between Nottingham and Newark),

WITHOUT RESERVE,

THE ENTIRE PACK

OF THE

RUFFORD HOUNDS.

The Hounds marked with an asterisk \* have all been used as Stallion Hounds.

LOT 1—THREE COUPLES.

| AGE. | NAME.     | SIRE.                 | DAM.          |
|------|-----------|-----------------------|---------------|
| 6    | *Pillager | Pilot                 | Charmer       |
| 5    | Painter   | Sir W. Wynn's Painter | Grove Purity  |
| 4    | Rubens    | Belvoir Rubicon       | Grove Frailty |
| 3    | *Larkspur | Richmond              | Lavender      |
| 2    | Fingal    | Grove Furrier         | Grove Abigail |
| 1    | Proctor   | Stream                | Pastime       |

LOT 2—THREE COUPLES.

Stallion

Stallion

Stallion

20

7 of 20



|   |            |                          |                            |
|---|------------|--------------------------|----------------------------|
| 5   | Harlequin  | Brooklesby Harbinger     | Gravity                    |
| 6   | Pomfret    | Richmond                 | Patience                   |
| 3   | *Gimcrack  | Prætor                   | Gaudy                      |
| 2   | Chanter    | Mr S. Lownde's Druid     | Grove Cheerful             |
| 1   | Warrior    | Lord Kesteven's Woodman  | Wanton                     |
| <i>Griffin 30</i><br><i>Hope's Vindicta</i> |            |                          |                            |
| 6   | Partner    | Pilot                    | Charmer                    |
| 6   | Storner    | Burton Regulus           | Scandal                    |
| 5   | *Potentate | Richmond                 | Patience                   |
| 2   | Bluster    | Mr S. Lownde's Druid     | Grove Blooming             |
| 1   | Gaylad     | Grove Glasher            | Gaudy                      |
| 1   | Ranter     | Lord Portsmouth's Render | Riot                       |
| <i>Conque 35</i>                            |            |                          |                            |
| 5   | *Conqueror | Pilot                    | Charmer                    |
| 6   | Finder     | Richmond                 | Flourish                   |
| 4   | *Boxer     | Mr Parry's Bosphorus     | Rival                      |
| 2   | Layman     | Richmond                 | Lavender                   |
| 1   | Prompter   | Lord Portsmouth's Major  | Promise                    |
| 1   | Sailor     | Grove Fairplay           | Syren                      |
| <i>Boughing 50</i>                          |            |                          |                            |
| <b>LOT 5.—THREE AND A HALF COUPLES.</b>     |            |                          |                            |
| 5   | *Cromwell  | Pilot                    | Charmer                    |
| 6   | Warlock    | Regulus                  | Willing                    |
| 3   | Reglan     | Grove Duster             | Rosamond                   |
| 2   | Regent     | Milton Bluster           | Rival                      |
| 1   | Bellman    | Richmond                 | Bluebell                   |
| 1   | Splendour  | Grove Druid              | Speedwell                  |
| 1   | Sportsman  |                          |                            |
| <i>Dr -</i><br><i>145</i>                   |            |                          |                            |
| <b>BITCHES.</b>                             |            |                          |                            |
| 6   | Gaudy      | Brooklesby Harbinger     | Gravity                    |
| 6   | Speedwell  | Brooklesby Singer        | Scandal                    |
| 4   | Gratitude  | Grove Layman             | Gravity                    |
| 3   | Bridesmaid | Prætor                   | Bounty                     |
| 2   | Beldam     | Prætor                   | Bounty                     |
| 1   | Charmer    | Grove Dreadnought        | Cheerful                   |
| <i>Calder 35</i>                            |            |                          |                            |
| 6   | Vanity     | Burton Vaulter           | Grove Barbara              |
| 3   | Laundress  | Richmond                 | Lavender                   |
| 3   | Gossamer   | Prætor                   | Gaudy                      |
| 2   | Governess  | Grove Lucifer            | Grove Gracious             |
| 2   | Lively     | Richmond                 | Lavender                   |
| 1   | Ransom     | Pillager                 | North Staffordshire Ransom |
| <i>only 100</i>                             |            |                          |                            |
| <i>2115</i>                                 |            |                          |                            |